

Recombinant Human Galactolipase/PLRP2 Protein (His Tag)

Catalog Number: PKSH032850

Note: Centrifuge before opening to ensure complete recovery of vial contents.

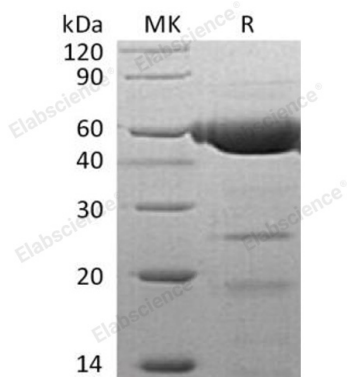
Description

Species	Human
Source	HEK293 Cells-derived Human Galactolipase;PLRP2 protein Lys 18-Cys469, with an C-terminal His
Calculated MW	51.2 kDa
Observed MW	62 kDa
Accession	AAH05989.1
Bio-activity	Not validated for activity

Properties

Purity	> 95 % as determined by reducing SDS-PAGE.
Concentration	Subject to label value.
Endotoxin	< 1.0 EU per µg of the protein as determined by the LAL method.
Storage	Store at < -20°C, stable for 6 months. Please minimize freeze-thaw cycles.
Shipping	This product is provided as liquid. It is shipped at frozen temperature with blue ice/gel packs. Upon receipt, store it immediately at < -20°C.
Formulation	Supplied as a 0.2 µm filtered solution of 20mM Tris-HCl, 150mM NaCl, 1mM CaCl ₂ , 10% Glycerol, pH 7.5.

Data



> 95 % as determined by reducing SDS-PAGE.

Background

Pancreatic Lipase-Related Protein 2 (PNLIPRP2) is a secreted protein that belongs to the Lipase family of AB hydrolase superfamily. PNLIPRP2 is a lipase with broad substrate specificity that contains one PLAT domain. PNLIPRP2 is expressed mainly in pancreas. PNLIPRP2 can hydrolyze both phospholipids and galactolipids. PNLIPRP2 acts preferentially on monoglycerides; phospholipids and galactolipids. PNLIPRP2 also contributes to milk fat hydrolysis.