

Recombinant Human ERP27 Protein (His Tag)

Catalog Number: PKSH033303

Note: Centrifuge before opening to ensure complete recovery of vial contents.

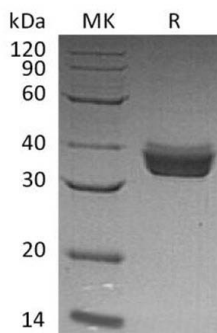
Description

Species	Human
Source	HEK293 Cells-derived Human ERP27 protein Glu26-Leu273, with an C-terminal His
Calculated MW	28.8 kDa
Observed MW	32-38 kDa
Accession	Q96DN0
Bio-activity	Not validated for activity

Properties

Purity	> 95 % as determined by reducing SDS-PAGE.
Endotoxin	< 1.0 EU per µg of the protein as determined by the LAL method.
Storage	Generally, lyophilized proteins are stable for up to 12 months when stored at -20 to -80 °C. Reconstituted protein solution can be stored at 4-8°C for 2-7 days. Aliquots of reconstituted samples are stable at < -20°C for 3 months.
Shipping	This product is provided as lyophilized powder which is shipped with ice packs.
Formulation	Lyophilized from a 0.2 µm filtered solution of 20mM Tris-HCl, 150mM NaCl, pH 8.0. Normally 5% - 8% trehalose, mannitol and 0.01% Tween 80 are added as protectants before lyophilization.
	Please refer to the specific buffer information in the printed manual.
Reconstitution	Please refer to the printed manual for detailed information.

Data



> 95 % as determined by reducing SDS-PAGE.

Background

Endoplasmic reticulum resident protein 27; also known as ER protein 27; C12orf46 and ERP27; is an endoplasmic reticulum luminal protein which is a member of the protein disulfide isomerase family. ERP27 contains one thioredoxin domain and does not contain a CXXC active site motif. ERP27 is widely expressed in many tissues; it has highest expression in pancreas; with lower levels in spleen; lung; kidney; thymus; and bone marrow. ERP27 interacts with PDIA3 and binds somatostatin-14 via hydrophobic interactions. ERP27 may act as a protease; protein disulfide isomerase; thio l-disulfide oxidase or phospholipase.

For Research Use Only