

Cleaved-NOTCH1 (V1754) Polyclonal Antibody

Catalog Number: E-AB-30054



Note: Centrifuge before opening to ensure complete recovery of vial contents.

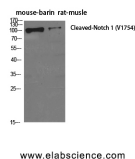
Description

Reactivity	Human, Mouse, Rat
Immunogen	Synthesized peptide derived from the Internal region of human Notch 1
Host	Rabbit
Isotype	IgG
Purification	Affinity purification
Conjugation	Unconjugated
Formulation	PBS with 0.02% sodium azide, 0.5% protective protein and 50% glycerol, pH7.4

Applications Recommended Dilution

WB	1:500-2000
IHC	1:50-300
IF	1:50-300

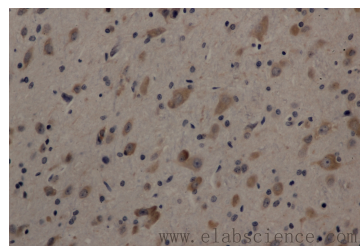
Data



www.elabscience.com

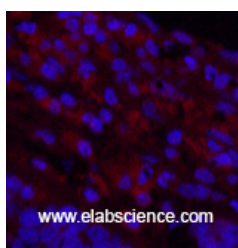
Western Blot analysis of Mouse brain, Rat muscle using Cleaved-NOTCH1 (V1754) Polyclonal Antibody at dilution of 1:500.

Observed MW:110kDa
Calculated Mw:273kDa



www.elabscience.com

Immunohistochemistry of paraffin-embedded Rat brain using Cleaved-NOTCH1 (V1754) Polyclonal Antibody at dilution of 1:200



www.elabscience.com

Immunofluorescence analysis of Human lung cancer tissue using Cleaved-NOTCH1 (V1754) Polyclonal Antibody at dilution of 1:200.

Preparation & Storage

Storage Store at -20°C. Avoid freeze / thaw cycles.

Background

For Research Use Only

A Reliable Research Partner in Life Science and Medicine

Toll-free: 1-888-852-8623

Web: www.elabscience.com

Tel: 1-832-243-6086

Email: techsupport@elabscience.com

Fax: 1-832-243-6017

Cleaved-NOTCH1 (V1754) Polyclonal Antibody

Catalog Number: E-AB-30054



This gene encodes a member of the Notch family. Members of this Type 1 transmembrane protein family share structural characteristics including an extracellular domain consisting of multiple epidermal growth factor-like (EGF) repeats, and an intracellular domain consisting of multiple, different domain types. Notch family members play a role in a variety of developmental processes by controlling cell fate decisions. The Notch signaling network is an evolutionarily conserved intercellular signaling pathway which regulates interactions between physically adjacent cells. In *Drosophila*, notch interaction with its cell-bound ligands (delta, serrate) establishes an intercellular signaling pathway that plays a key role in development. Homologues of the notch-ligands have also been identified in human, but precise interactions between these ligands and the human notch homologues remain to be determined. This protein is cleaved in the trans-Golgi network, and presented on the cell surface as a heterodimer. This protein functions as a receptor for membrane bound ligands, and may play multiple roles during development.

For Research Use Only

A Reliable Research Partner in Life Science and Medicine

Toll-free: 1-888-852-8623

Tel: 1-832-243-6086

Fax: 1-832-243-6017

Web: www.elabscience.com

Email: techsupport@elabscience.com