

Recombinant Rat Carboxypeptidase A2/CPA2 Protein (His Tag)

Catalog Number: PKSR030147

Note: Centrifuge before opening to ensure complete recovery of vial contents.

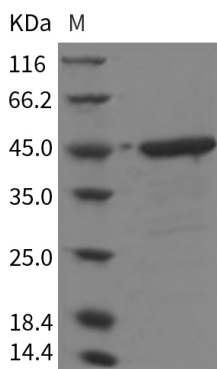
Description

| | |
|----------------------|---|
| Species | Rat |
| Source | HEK293 Cells-derived Rat Carboxypeptidase A2/CPA2 protein Met1-Tyr417, with an C-terminal His |
| Calculated MW | 46.5 kDa |
| Accession | NP_001013101.2 |
| Bio-activity | Not validated for activity |

Properties

| | |
|-----------------------|--|
| Purity | > 90 % as determined by reducing SDS-PAGE. |
| Endotoxin | < 1.0 EU per µg of the protein as determined by the LAL method. |
| Storage | Generally, lyophilized proteins are stable for up to 12 months when stored at -20 to -80 °C. Reconstituted protein solution can be stored at 4-8°C for 2-7 days. Aliquots of reconstituted samples are stable at < -20°C for 3 months. |
| Shipping | This product is provided as lyophilized powder which is shipped with ice packs. |
| Formulation | Lyophilized from sterile PBS, pH 7.4 Normally 5% - 8% trehalose, mannitol and 0.01% Tween 80 are added as protectants before lyophilization. Please refer to the specific buffer information in the printed manual. |
| Reconstitution | Please refer to the printed manual for detailed information. |

Data



> 90 % as determined by reducing SDS-PAGE.

Background

Carboxypeptidase A2 (CPA2) is a secreted pancreatic procarboxy -peptidase, and cleaves the C-terminal amide or ester bond of peptides that have a free C-terminal carboxyl group. The hydrolytic action of CPA2 was identified with a preference towards long substrates with aromatic amino acids in their C-terminal end, particularly tryptophan. CPA2 comprises a signal peptide, a pro region and a mature chain, and can be activated after cleavage of the pro peptide. Three different forms of human pancreatic procarboxypeptidase A have been isolated, and the A1 and A2 forms are always secreted as monomeric proteins with different biochemical properties.

For Research Use Only

Toll-free: 1-888-852-8623
Web: www.elabscience.com

Tel: 1-832-243-6086
Email: techsupport@elabscience.com

Fax: 1-832-243-6017