

TBC1D4 Polyclonal Antibody

Catalog Number:E-AB-13723



Note: Centrifuge before opening to ensure complete recovery of vial contents.

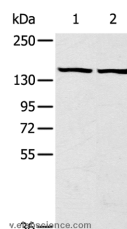
Description

Reactivity	Human,Mouse
Immunogen	Synthetic peptide of human TBC1D4
Host	Rabbit
Isotype	IgG
Purification	Affinity purification
Conjugation	Unconjugated
Formulation	PBS with 0.05% sodium azide and 50% glycerol, PH7.4

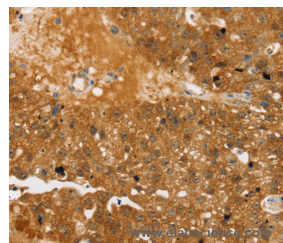
Applications Recommended Dilution

WB	1:500-1:2000
IHC	1:30-1:150

Data



Western Blot analysis of Hela and hepg2 cell using TBC1D4 Polyclonal Antibody at dilution of 1:320
Calculated Mw:147kDa



Immunohistochemistry of paraffin-embedded Human breast cancer using TBC1D4 Polyclonal Antibody at dilution of 1:40

Preparation & Storage

Storage Store at -20°C. Avoid freeze / thaw cycles.

Background

TBC1 domain family member 4 (TBC1D4), also designated AS160, can be insulin- and/or AKT1-induced. Insulin-stimulated phosphorylation is required for GLUT4 translocation. TBC1D4 may play a role as a GTPase activating protein for proteins in the Rab family. It is expressed primarily in skeletal muscle and heart, as well as spleen, lymph node and leukocytes. Defects in the TBC1D4 gene may cause atopic dermatitis (AD), sometimes referred to as eczema, an atopic chronic skin disease. The skin of affected individuals reacts to irritants or allergens and becomes red, flaky and itchy. The skin is also more vulnerable to inflammations, and symptoms can grow or disappear over time.

For Research Use Only

A Reliable Research Partner in Life Science and Medicine

Toll-free: 1-888-852-8623

Web: www.elabscience.com

Tel: 1-832-243-6086

Email: techsupport@elabscience.com

Fax: 1-832-243-6017