

ITGAX Polyclonal Antibody

catalog number: E-AB-70017

Note: Centrifuge before opening to ensure complete recovery of vial contents.

Description

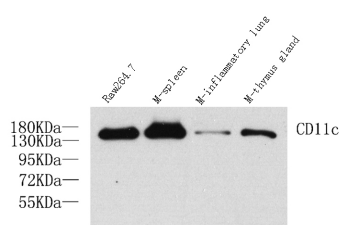
Reactivity	Human;Mouse;Rat
Immunogen	KLH conjugated Synthetic peptide corresponding to Mouse CD11c
Host	Rabbit
Isotype	IgG
Purification	Affinity purification
Conjugation	Unconjugated
buffer	Phosphate buffered solution, pH 7.4, containing 0.05% stabilizer, 1% protein protectant and 50% glycerol.

Applications

Recommended Dilution

WB	1:500-1:1000
IHC	1:100-1:300
IF	1:100-1:300

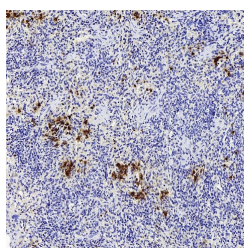
Data



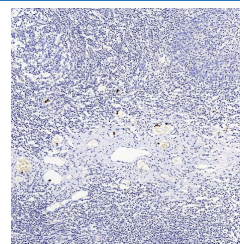
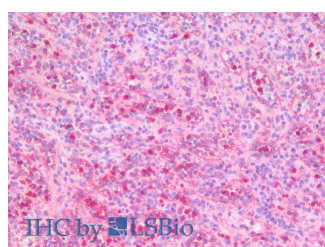
Western Blot analysis of various samples using ITGAX Polyclonal Antibody at dilution of 1:1000.

Observed-MV:150 kDa

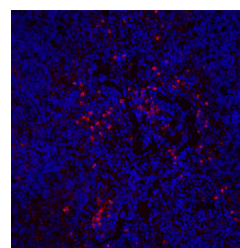
Calculated-MV:120-150 kDa



Immunohistochemistry analysis of paraffin-embedded Rat inflammatory spleen using ITGAX Polyclonal Antibody at dilution of 1:200.



Immunohistochemistry analysis of paraffin-embedded Human amygdalitis using ITGAX Polyclonal Antibody at dilution of 1:200.



Immunofluorescence analysis of Mouse inflammatory spleen using ITGAX Polyclonal Antibody at dilution of 1:200.

For Research Use Only

ITGAX Polyclonal Antibody

catalog number: E-AB-70017



Immunohistochemistry analysis of paraffin-embedded
Human Spleen using ITGAX Polyclonal
Antibody(Elabscience Product Detected by Lifespan).

Preparation & Storage

Storage	Store at -20°C Valid for 12 months. Avoid freeze / thaw cycles.
Shipping	The product is shipped with ice pack,upon receipt,store it immediately at the temperature recommended.

Background

Integrins are cell adhesion receptors that are heterodimers composed of non-covalently associated α and β subunits. CD11c/Integrin alpha X is a type I transmembrane protein present on a variety of cells,including monocytes/macrophages,granulocytes,NK cells and dendritic cells. Integrin alpha X/beta 2 acts a receptor for fibrinogen and is important in monocyte adhesion and chemotaxis.

For Research Use Only

A Reliable Research Partner in Life Science and Medicine
Tel: 400-999-2100

Email:techsupport@elabscience.cn

Web:www.elabscience.cn

Rev. V1.7