

Recombinant CD8 beta Monoclonal Antibody

catalog number: **AN301982L**

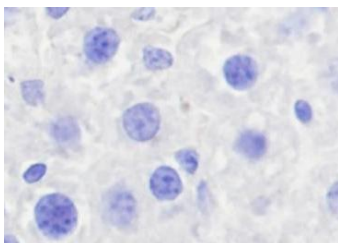
Note: *Centrifuge before opening to ensure complete recovery of vial contents.*

Description

Reactivity	Mouse
Immunogen	Peptide. This information is proprietary to PTMab.
Host	Rabbit
Isotype	IgG, κ
Clone	A702
Purification	Protein A purified
Buffer	PBS, 50% glycerol, 0.05% Proclin 300, 0.05% protein protectant.

Applications Recommended Dilution

WB	1:1000
IHC	1:100



Immunohistochemistry of paraffin-embedded Mouse liver (negative tissue) using CD8 beta Monoclonal Antibody at dilution of 1:100.

Preparation & Storage

Storage	Store at -20°C Valid for 12 months. Avoid freeze / thaw cycles.
Shipping	Ice bag

Background

Cluster of Differentiation 8 (CD8) is a disulphide-linked heterodimer consisting of the unrelated α and β subunits. Each subunit is a glycoprotein composed of a single extracellular Ig-like domain, a polypeptide linker, a transmembrane part and a short cytoplasmic tail. On T cells, CD8 is the coreceptor for the T cell receptor (TCR), and these two distinct structures recognize the Antigen–Major Histocompatibility Complex (MHC). Specifically, the Ig-like domain of CD8 α interacts with the $\alpha 3$ -domain of the MHC class I molecule. CD8 ensures specificity of the TCR–antigen interaction, prolongs the contact between the T cell and the antigen presenting cell, and the α chain recruits the tyrosine kinase Lck, which is essential for T cell activation.

For Research Use Only