

## Elab Fluor® 700 Anti-Human CD195 Antibody[RoAb13]

Catalog Number: E-AB-F1418M1

Note: Centrifuge before opening to ensure complete recovery of vial contents.

### Description

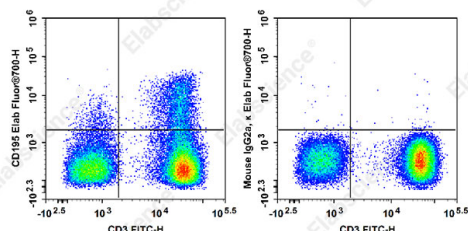
Reactivity	Human
Host	Mouse
Isotype	Mouse IgG2a, κ
Clone No.	RoAb13
Isotype Control	Elab Fluor® 700 Mouse IgG2a, κ Isotype Control[C1.18.4] [Product E-AB-F09802M1]
Conjugation	Elab Fluor® 700
Conjugation Information	Elab Fluor® 700 is designed to be excited by the Red laser (627-640 nm) and detected using an optical filter centered near 719 nm (e.g., a 725/40 nm bandpass filter).
Storage Buffer	Phosphate buffered solution, pH 7.2, containing 0.09% sodium azide and 1% BSA.

### Applications

### Recommended usage

FCM	Each lot of this antibody is quality control tested by flow cytometric analysis. <b>The amount of the reagent is suggested to be used 5 μL of antibody per test (million cells in 100 μL staining volume or per 100 μL of whole blood).</b> Please check your vial before the experiment. Since applications vary, the appropriate dilutions must be determined for individual use.
-----	---

### Data



Staining of normal human peripheral blood cells with FITC

Anti-Human CD3 Antibody[OKT-3] and Elab Fluor® 700 Anti-Human CD195 Antibody[RoAb13](left) or Elab Fluor® 700 Mouse IgG2a, κ Isotype Control(right). Cells in the lymphocytes gate were used for analysis.

### Preparation & Storage

Storage	Keep as concentrated solution. This product can be stored at 2-8°C for 12 months. Please protected from prolonged exposure to light and do not freeze.
Shipping	Ice bag

### Antigen Information

Alternate Names	CCR5
Uniprot ID	P51681
Gene ID	1234

### For Research Use Only

## Background

CD195, also known as CCR5, is a 45 kD G protein-coupled seven transmembrane C C-chemokine receptor. It binds to MIP-1 $\alpha$ , MIP-1 $\beta$ , and RANTES and is expressed on a subset of T cells and monocytes. CCR5 mediates an intracellular signal thought to induce cell differentiation and proliferation. CCR5 has also been shown to act as a co-receptor for R5 HIV-1 cell entry; modification of CCR5 by sulfation contributes to the efficiency of HIV-1 entry. Studies have shown CCR5 to play a role in a variety of other human diseases, ranging from infectious and inflammatory diseases to cancer.