

Elab Bright™ Violet 510 Anti-Mouse CD8a Antibody[53-6.7]

Catalog Number: E-AB-F1104R1

Note: Centrifuge before opening to ensure complete recovery of vial contents.

Description

| | |
|-------------------------|--|
| Reactivity | Mouse |
| Host | Rat |
| Isotype | Rat IgG2a, κ |
| Clone No. | 53-6.7 |
| Isotype Control | Elab Bright™ Violet 510 Rat IgG2a, κ Isotype Control[R35-95] [Product AN00822R1] |
| Conjugation | Elab Bright™ Violet 510 |
| Conjugation Information | Elab Bright Violet 510 is designed to be excited by the violet laser (405 nm) and detected using an optical filter centered near 510 nm (e.g., a 525/50 nm bandpass filter). |
| Storage Buffer | Phosphate buffered solution, pH 7.2, containing 0.09% stabilizer and 1% protein protectant. |

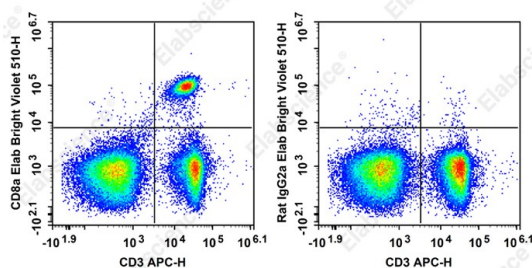
Applications

Recommended usage

FCM

Each lot of this antibody is quality control tested by flow cytometric analysis. **The amount of the reagent is suggested to be used 5 μ L of antibody per test (million cells in 100 μ L staining volume or per 100 μ L of whole blood).** Please check your vial before the experiment. Since applications vary, the appropriate dilutions must be determined for individual use.

Data



Staining of Balb/C murine splenocytes cells with APC Anti-Mouse CD3 Antibody and Elab Bright Violet 510 Anti-Mouse CD8a Antibody[53-6.7] (left) or Elab Bright Violet 510 Rat IgG2a, κ Isotype Control (right). Total viable cells were used for analysis.

Preparation & Storage

| | |
|----------|---|
| Storage | Keep as concentrated solution. This product can be stored at 2-8°C for 12 months. Please protected from prolonged exposure to light and do not freeze. |
| Shipping | Ice bag |

Antigen Information

| | |
|-----------------|--------------|
| Alternate Names | T8;Lyt2;Ly-2 |
| Uniprot ID | P01731 |

For Research Use Only

Toll-free: 1-888-852-8623
Web: www.elabscience.com

Tel: 1-832-243-6086
Email: techsupport@elabscience.com

Fax: 1-832-243-6017

Rev. V1.5

Gene ID

12525

Background

CD8, also known as Lyt-2, Ly-2, or T8, consists of disulfide-linked α and β chains that form the α (CD8a)/ β (CD8b) heterodimer and α/α homodimer. CD8a is a 34 kD protein that belongs to the immunoglobulin family. The CD8 α/β heterodimer is expressed on the surface of most thymocytes and a subset of mature TCR α/β T cells. CD8 expression on mature T cells is non-overlapping with CD4. The CD8 α/α homodimer is expressed on a subset of γ/δ TCR-bearing T cells, NK cells, intestinal intraepithelial lymphocytes, and lymphoid dendritic cells. CD8 is an antigen co-receptor on T cells that interacts with MHC class I on antigen-presenting cells or epithelial cells. CD8 promotes T cell activation through its association with the TCR complex and protein tyrosine kinase lck.