

Heparanase 1 Polyclonal Antibody

catalog number: **E-AB-66830**

Note: Centrifuge before opening to ensure complete recovery of vial contents.

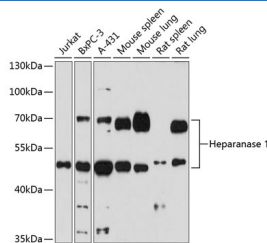
Description

Reactivity	Human;Mouse;Rat
Immunogen	Recombinant protein of human Heparanase 1
Host	Rabbit
Isotype	IgG
Purification	Affinity purification
Buffer	Phosphate buffered solution, pH 7.4, containing 0.05% stabilizer and 50% glycerol.

Applications

WB	1:500-1:2000
IF	1:50-1:200

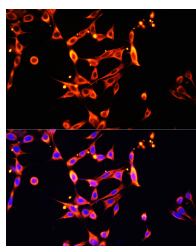
Data



Western blot analysis of extracts of various cells using Heparanase 1 Polyclonal Antibody at dilution of 1:1000.

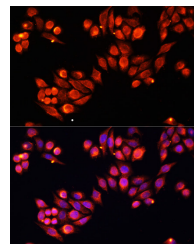
Observed-MW: 50 kDa/65 kDa

Calculated-MW: 42 kDa/53 kDa/54 kDa/61 kDa



Immunofluorescence analysis of NIH/3T3 cells using Heparanase 1 Polyclonal Antibody at dilution of 1:100. Blue:

DAPI for nuclear staining.



Immunofluorescence analysis of HeLa cells using Heparanase 1 Polyclonal Antibody at dilution of 1:100. Blue: DAPI for nuclear staining.

Preparation & Storage

Storage	Store at -20°C Valid for 12 months. Avoid freeze / thaw cycles.
Shipping	The product is shipped with ice pack, upon receipt, store it immediately at the temperature recommended.

Background

For Research Use Only

Heparan sulfate proteoglycans are major components of the basement membrane and extracellular matrix. The protein encoded by this gene is an enzyme that cleaves heparan sulfate proteoglycans to permit cell movement through remodeling of the extracellular matrix. In addition, this cleavage can release bioactive molecules from the extracellular matrix. Several transcript variants encoding different isoforms have been found for this gene.

For Research Use Only

Toll-free: 1-888-852-8623
Web: www.elabscience.com

Tel: 1-832-243-6086
Email: techsupport@elabscience.com

Fax: 1-832-243-6017

Rev. V1.7