

LCP1 Polyclonal Antibody

catalog number: E-AB-66089

Note: Centrifuge before opening to ensure complete recovery of vial contents.

Description

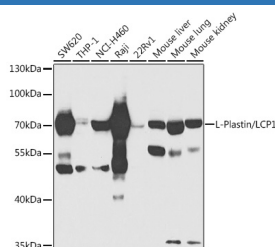
| | |
|---------------------|--|
| Reactivity | Human;Mouse |
| Immunogen | Recombinant fusion protein of human LCP1 |
| Host | Rabbit |
| Isotype | IgG |
| Purification | Affinity purification |
| Buffer | Phosphate buffered solution, pH 7.4, containing 0.05% stabilizer and 50% glycerol. |

Applications

Recommended Dilution

| | |
|-----------|--------------|
| WB | 1:500-1:2000 |
|-----------|--------------|

Data



Western blot analysis of extracts of various cell lines using L-Plastin/LCP1 Polyclonal Antibody at 1:1000 dilution.

Observed-MV:70 kDa

Calculated-MV:21 kDa/70 kDa

Preparation & Storage

| | |
|-----------------|--|
| Storage | Store at -20°C Valid for 12 months. Avoid freeze / thaw cycles. |
| Shipping | The product is shipped with ice pack, upon receipt, store it immediately at the temperature recommended. |

Background

Plastins are a family of actin-binding proteins that are conserved throughout eukaryote evolution and expressed in most tissues of higher eukaryotes. In humans, two ubiquitous plastin isoforms (L and T) have been identified. Plastin 1 (otherwise known as Fimbrin) is a third distinct plastin isoform which is specifically expressed at high levels in the small intestine. The L isoform is expressed only in hemopoietic cell lineages, while the T isoform has been found in all other normal cells of solid tissues that have replicative potential (fibroblasts, endothelial cells, epithelial cells, melanocytes, et c.). However, L-plastin has been found in many types of malignant human cells of non-hemopoietic origin suggesting that its expression is induced accompanying tumorigenesis in solid tissues.

For Research Use Only