

## mCherry-Tag Polyclonal Antibody

catalog number: **E-AB-40508**

**Note:** Centrifuge before opening to ensure complete recovery of vial contents.

### Description

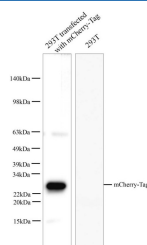
|                     |  |
|---------------------|--|
| <b>Reactivity</b>   | All  |
| <b>Immunogen</b>    | Recombinant Discosoma sp. mCherry Protein                                |
| <b>Host</b>         | Rabbit   |
| <b>Isotype</b>      | IgG  |
| <b>Purification</b> | Antigen Affinity Purification  |
| <b>Buffer</b>       | PBS with 0.05% Proclin300, 1% protective protein and 50% glycerol, pH7.4 |

### Applications

### Recommended Dilution

|           |               |
|-----------|---------------|
| <b>WB</b> | 1:1000-1:2000 |
|-----------|---------------|

### Data



Western blot with Anti mCherry-Tag Polyclonal Antibody at dilution of 1:1000. Lane 1:293T Ttrasfected with mCherry-Tag cell lysate,Lane 2:293T cell lysate.

**Observed-MW:30 kDa**

**Calculated-MW:30 kDa**

### Preparation & Storage

|                 |  |
|-----------------|--|
| <b>Storage</b>  | Store at -20°C Valid for 12 months. Avoid freeze / thaw cycles.  |
| <b>Shipping</b> | The product is shipped with ice pack, upon receipt, store it immediately at the temperature recommended. |

### Background

mCherry is a member of the mFruits family of monomeric red fluorescent proteins (mRFPs). As a RFP, mCherry was derived from DsRed of Discosoma sea anemones unlike green fluorescent proteins (GFPs) which are often derived from Aequoera victoria jellyfish.

### For Research Use Only