

# PPP1R15A Polyclonal Antibody

catalog number: E-AB-19394

**Note:** Centrifuge before opening to ensure complete recovery of vial contents.

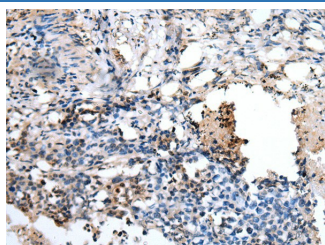
## Description

<b>Reactivity</b>	Human
<b>Immunogen</b>	Synthetic peptide of human PPP1R15A
<b>Host</b>	Rabbit
<b>Isotype</b>	IgG
<b>Purification</b>	Antigen affinity purification
<b>Conjugation</b>	Unconjugated
<b>buffer</b>	Phosphate buffered solution, pH 7.4, containing 0.05% stabilizer and 50% glycerol.

## Applications

<b>IHC</b>	1:30-1:150
------------	------------

## Data



Immunohistochemistry of paraffin-embedded Human lung cancer tissue using PPP1R15A Polyclonal Antibody at dilution of 1:45(×200)

## Preparation & Storage

<b>Storage</b>	Store at -20°C Valid for 12 months. Avoid freeze / thaw cycles.
<b>Shipping</b>	The product is shipped with ice pack, upon receipt, store it immediately at the temperature recommended.

## Background

PPP1R15A (Protein Phosphatase 1 Regulatory Subunit 15A) is a Protein Coding gene. Diseases associated with PPP1R15A include Malignant Pleural Mesothelioma. Among its related pathways are Transcriptional activity of SMAD 2/SMAD3-SMAD4 heterotrimer and Activation of cAMP-Dependent PKA. GO annotations related to this gene include protein kinase binding. This gene is a member of a group of genes whose transcript levels are increased following stressful growth arrest conditions and treatment with DNA-damaging agents. The induction of this gene by ionizing radiation occurs in certain cell lines regardless of p53 status, and its protein response is correlated with apoptosis following ionizing radiation.

## For Research Use Only