

PLXNB1 Polyclonal Antibody

catalog number: E-AB-16723

Note: Centrifuge before opening to ensure complete recovery of vial contents.

Description

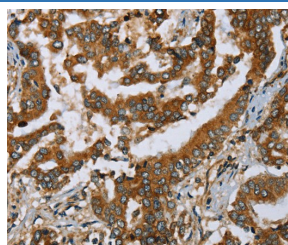
Reactivity	Human;Mouse
Immunogen	Synthetic peptide of human PLXNB1
Host	Rabbit
Isotype	IgG
Purification	Affinity purification
Conjugation	Unconjugated
buffer	Phosphate buffered solution, pH 7.4, containing 0.05% stabilizer and 50% glycerol.

Applications

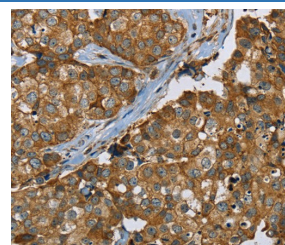
Recommended Dilution

IHC	1:50-1:200
------------	------------

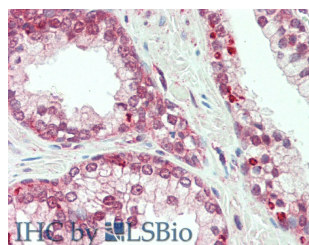
Data



Immunohistochemistry of paraffin-embedded Human liver cancer tissue using PLXNB1 Polyclonal Antibody at dilution 1:50



Immunohistochemistry of paraffin-embedded Human breast cancer tissue using PLXNB1 Polyclonal Antibody at dilution 1:50



Immunohistochemistry of paraffin-embedded Prostate tissue using PLXNB1 Polyclonal Antibody at dilution of 1:60 (Elabscience Product Detected by Lifespan).

Preparation & Storage

Storage	Store at -20°C Valid for 12 months. Avoid freeze / thaw cycles.
Shipping	The product is shipped with ice pack, upon receipt, store it immediately at the temperature recommended.

Background

Plexin B1 is a protein of the plexin family that in humans is encoded by the PLXNB1 gene. Receptor for SEMA4D. Plays a role in RHOA activation and subsequent changes of the actin cytoskeleton. Plays a role in axon guidance, invasive growth and cell migration.

For Research Use Only