

Recombinant DCUN1D2/DCN1-like protein 2 Monoclonal Antibody

catalog number: **AN300454P**

Note: Centrifuge before opening to ensure complete recovery of vial contents.

Description

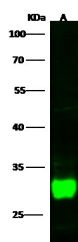
Reactivity	Human
Immunogen	Recombinant Human DCUN1D2/DCN1-like protein 2 Protein
Host	Rabbit
Isotype	IgG
Clone	6B7
Purification	Protein A
Buffer	0.2 µm filtered solution in PBS

Applications

Recommended Dilution

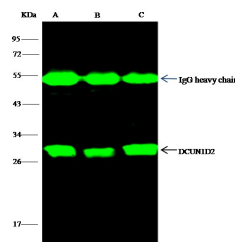
WB	1:500-1:2000
IP	1-4 µL/mg of lysate

Data



Western Blot with DCUN1D2 Monoclonal Antibody at dilution of 1:500. Lane A: HCT116 Whole Cell Lysate, Lysates/proteins at 30 µg per lane.

Observed-MW:30 kDa
Calculated-MW:30 kDa



Immunoprecipitation analysis using 2 µL anti-DCUN1D2 Monoclonal Antibody and 15 µL of 50 % Protein G agarose.

Western blot was performed from the immunoprecipitate using DCUN1D2 Monoclonal Antibody at a dilution of 1:100.

Lane A:0.5 mg Hela Whole Cell Lysate, Lane B:0.5 mg A549 Whole Cell Lysate, Lane C:0.5 mg HuT78 Whole Cell Lysate

Observed-MW:30 kDa
Calculated-MW:30 kDa

Preparation & Storage

Storage	This antibody can be stored at 2°C-8°C for one month without detectable loss of activity. Antibody products are stable for twelve months from date of receipt when stored at -20°C to -80°C. Preservative-Free. Avoid repeated freeze-thaw cycles.
Shipping	Ice bag

Background

DCUN1D2 (DCN1-like protein 2), also known as DCNL2. It is predicted to be located in the cytoplasm and nucleus. Mostly expressed in liver, kidney and brain (PMID: 26906416). Contributes to the neddylation of all cullins by transferring NEDD8 from N-terminally acetylated NEDD8-conjugating E2s enzyme to different cullin C-terminal domain-RBX complexes and plays an essential role in the regulation of SCF (SKP1-CUL1-F-box protein)-type complexes activity (PMID: 19617556). The molecular weight of DCUN1D2 is 30 kDa.

For Research Use Only