

IRX2 Polyclonal Antibody

catalog number: **E-AB-52041**

Note: Centrifuge before opening to ensure complete recovery of vial contents.

Description

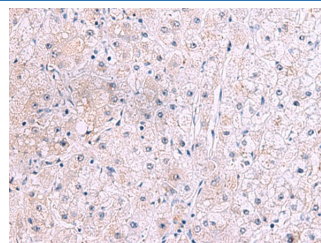
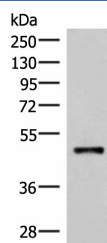
Reactivity	Human;Mouse
Immunogen	Synthetic peptide of human IRX2
Host	Rabbit
Isotype	IgG
Purification	Antigen affinity purification
Buffer	Phosphate buffered solution, pH 7.4, containing 0.05% stabilizer and 50% glycerol.

Applications

Recommended Dilution

WB	1:500-1:2000
IHC	1:30-1:150

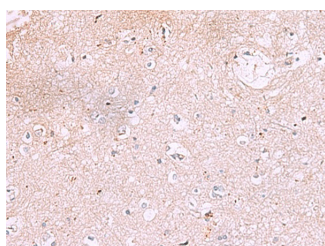
Data



Western blot analysis of Mouse lung tissue lysate using IRX2 Polyclonal Antibody at dilution of 1:300

Immunohistochemistry of paraffin-embedded Human liver cancer tissue using IRX2 Polyclonal Antibody at dilution of 1:45(×200)

Observed-MV:Refer to figures
Calculated-MV:49 kDa



Immunohistochemistry of paraffin-embedded Human brain tissue using IRX2 Polyclonal Antibody at dilution of 1:45(×200)

Preparation & Storage

Storage	Store at -20°C Valid for 12 months. A void freeze / thaw cycles.
Shipping	The product is shipped with ice pack,upon receipt,store it immediately at the temperature recommended.

Background

For Research Use Only

IRX2 is a member of the Iroquois homeobox gene family. Members of this family appear to play multiple roles during pattern formation of vertebrate embryos. IRX2 (Iroquois Homeobox 2) is a Protein Coding gene. Diseases associated with IRX2 include Kidney Clear Cell Sarcoma. GO annotations related to this gene include sequence-specific DNA binding. An important paralog of this gene is IRX5.

For Research Use Only

Toll-free: 1-888-852-8623
Web: www.elabscience.com

Tel: 1-832-243-6086
Email: techsupport@elabscience.com

Fax: 1-832-243-6017

Rev. V1.7