

MYDGF Polyclonal Antibody

catalog number: E-AB-17915

Note: Centrifuge before opening to ensure complete recovery of vial contents.

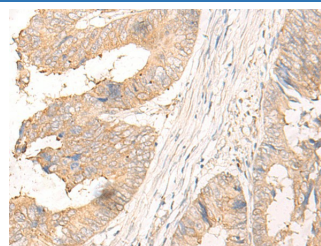
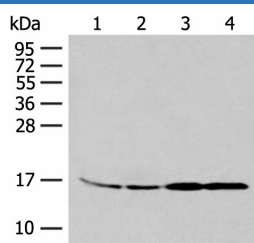
Description

Reactivity	Human;Mouse
Immunogen	Synthetic peptide of human MYDGF
Host	Rabbit
Isotype	IgG
Purification	Antigen affinity purification
Conjugation	Unconjugated
buffer	Phosphate buffered solution, pH 7.4, containing 0.05% stabilizer and 50% glycerol.

Applications

Applications	Recommended Dilution
WB	1:500-1:2000
IHC	1:30-1:150

Data



Western blot analysis of 293T and K562 cell Human between peritoneal stromal sarcoma tissue HEPG2 cell lysates using MYDGF Polyclonal Antibody at dilution of 1:250

Immunohistochemistry of paraffin-embedded Human colorectal cancer tissue using MYDGF Polyclonal Antibody at dilution of 1:25(×200)

Observed-MV:Refer to figures

Calculated-MV:19 kDa

Preparation & Storage

Storage	Store at -20°C Valid for 12 months. Avoid freeze / thaw cycles.
Shipping	The product is shipped with ice pack,upon receipt,store it immediately at the temperature recommended.

Background

The protein encoded by this gene was previously thought to support proliferation of lymphoid cells and was considered an interleukin. However, this activity has not been reproducible and the function of this protein is currently unknown.

For Research Use Only