

FITC Anti-Mouse CD162 Antibody[4RA10]

Catalog Number: E-AB-F1034UC

Note: Centrifuge before opening to ensure complete recovery of vial contents.

Description

Reactivity	Mouse
Host	Rat
Isotype	Rat IgG1, κ
Clone No.	4RA10
Isotype Control	FITC Rat IgG1, κ Isotype Control[HRPN] [Product E-AB-F09823C]
Conjugation	FITC
Conjugation Information	FITC is designed to be excited by the Blue laser (488 nm) and detected using an optical filter centered near 530 nm (e.g., a 525/40 nm bandpass filter).
Storage Buffer	Phosphate buffered solution, pH 7.2, containing 0.09% stabilizer and 1% protein protectant.

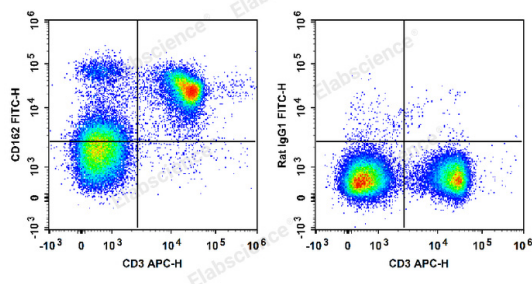
Applications

Recommended usage

FCM

Each lot of this antibody is quality control tested by flow cytometric analysis. Please check your vial before the experiment. Since applications vary, the appropriate dilutions must be determined for individual use. We suggest each investigator should titrate the reagent to obtain optimal results [The recommended concentration is 0.1-1 $\mu\text{g}/10^6$ cells in 100 μL volume].

Data



C57BL/6 murine splenocytes are stained with APC Anti-Mouse CD3 Antibody and FITC Anti-Mouse CD162 Antibody (Left). Splenocytes are stained with APC Anti-Mouse CD3 Antibody and FITC Rat IgG1 Isotype Control (Right).

Preparation & Storage

Storage	Keep as concentrated solution. This product can be stored at 2-8°C for 12 months. Please protected from prolonged exposure to light and do not freeze.
Shipping	Ice bag

Antigen Information

Alternate Names	CD162;P-selectin glycoprotein ligand 1;PSGL-1;Selectin P ligand;Selplg;PSGL1
Uniprot ID	Q62170
Gene ID	20345

For Research Use Only

Background

The 4RA10 antibody reacts with the N-terminal functional peptide of CD162 (P-selectin glycoprotein ligand-1, PSGL-1), encoded by the Selp1 gene. PSGL-1 is expressed on the cell surface as a homodimer of approximately 230 kDa. In the mouse, Selp1 mRNA is detected in most tissues, with high levels found in hematopoietic cells, brain, and adipose tissue. Flow cytometric analyses have revealed CD162 expression on bone marrow-derived mast and dendritic cells, splenic leukocytes, platelets, peripheral blood neutrophils, and neutrophil and T-cell lines. PSGL-1 is a ligand for P-selectin (CD62P) and is involved in leukocyte rolling, the migration of leukocytes into inflamed tissues, and responses to vascular injury. It is a sialomucin that must be specifically sialylated, fucosylated, and sulfated to bind P-selectin. There is also evidence that other ligands for PSGL-1 and CD62P may exist. 4RA10 mAb is reported to block the binding of mouse leukocytes to CD62P and CD62L.

For Research Use Only