

## Recombinant Phospho-Chk1 (Ser296) Monoclonal Antibody

catalog number: **AN300388L**

**Note:** *Centrifuge before opening to ensure complete recovery of vial contents.*

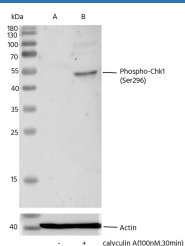
### Description

<b>Reactivity</b>	Human
<b>Immunogen</b>	A synthetic peptide corresponding to the residues around
<b>Host</b>	Rabbit
<b>Isotype</b>	IgG
<b>Clone</b>	12F2
<b>Purification</b>	Protein A
<b>Buffer</b>	10 mM sodium HEPES, 150 mM NaCl, 100 µg/mL protein protectant, 50% glycerol, pH 7.5

### Applications Recommended Dilution

<b>WB</b>	1:500-1:2000
-----------	--------------

### Data



Western blot analysis of extracts from serum-starved HeLa, untreated(line A) or treated with calyculin A(100nM, 30min; +)(line B), using Phospho-Chk1 (Ser296) rabbit monoclonal Antibody at 1:1000 dilution. (upper) or Anti-Actin Antibody, Chimeric Rabbit Monoclonal at 1:50000 dilution(lower).

**Observed-MW:54 kDa**

**Calculated-MW:54 kDa**

### Preparation & Storage

<b>Storage</b>	This antibody can be stored at 2°C-8°C for one month without detectable loss of activity. Antibody products are stable for twelve months from date of receipt when stored at -20°C to -80°C. Preservative-Free. Avoid repeated freeze-thaw cycles.
<b>Shipping</b>	Ice bag

### Background

The protein encoded by this gene belongs to the Ser/Thr protein kinase family. It is required for checkpoint mediated cell cycle arrest in response to DNA damage or the presence of unreplicated DNA. This protein acts to integrate signals from ATM and ATR, two cell cycle proteins involved in DNA damage responses, that also associate with chromatin in meiotic prophase I. Phosphorylation of CDC25A protein phosphatase by this protein is required for cells to delay cell cycle progression in response to double-strand DNA breaks. Several alternatively spliced transcript variants have been found for this gene.

### For Research Use Only