

Recombinant ALDH1A1 Monoclonal Antibody

catalog number: **AN300711L**

Note: Centrifuge before opening to ensure complete recovery of vial contents.

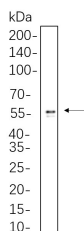
Description

| | |
|---------------------|---|
| Reactivity | Human;Mouse;Rat |
| Immunogen | Recombinant Human ALDH1A1 protein |
| Host | Rabbit |
| Isotype | IgG, κ |
| Clone | 12G6 |
| Purification | Protein A |
| Buffer | PBS, 50% glycerol, 0.05% Proclin 300, 0.05% protein protectant. |

Applications Recommended Dilution

| | |
|-----------|----------------|
| WB | 1:2000-1:10000 |
|-----------|----------------|

Data



Western Blot with Recombinant ALDH1A1 Monoclonal Antibody at dilution of 1:1000 dilution. Lane A: HepG2 whole cell lysate.

Observed-MW:55 kDa

Calculated-MW:55 kDa

Preparation & Storage

| | |
|-----------------|---|
| Storage | Store at -20°C Valid for 12 months. Avoid freeze / thaw cycles. |
| Shipping | Ice bag |

Background

The protein encoded by this gene belongs to the aldehyde dehydrogenase family. Aldehyde dehydrogenase is the next enzyme after alcohol dehydrogenase in the major pathway of alcohol metabolism. There are two major aldehyde dehydrogenase isozymes in the liver, cytosolic and mitochondrial, which are encoded by distinct genes, and can be distinguished by their electrophoretic mobility, kinetic properties, and subcellular localization. This gene encodes the cytosolic isozyme. Studies in mice show that through its role in retinol metabolism, this gene may also be involved in the regulation of the metabolic responses to high-fat diet.

For Research Use Only