

Recombinant Human PBLD/MAWBP Protein (His Tag)

Catalog Number: PKSH032860

Note: Centrifuge before opening to ensure complete recovery of vial contents.

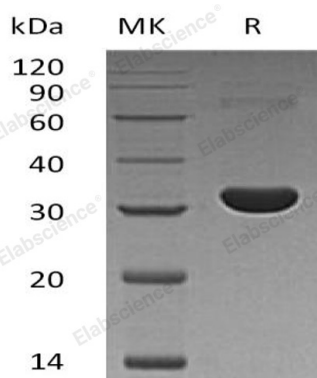
Description

Species	Human
Source	E.coli-derived Human PBLD;MAWBP protein Met 1-Ala288, with an N-terminal His
Calculated MW	34.0 kDa
Observed MW	30 kDa
Accession	P30039
Bio-activity	Not validated for activity

Properties

Purity	> 95 % as determined by reducing SDS-PAGE.
Concentration	Subject to label value.
Endotoxin	< 1.0 EU per µg of the protein as determined by the LAL method.
Storage	Store at < -20°C, stable for 6 months. Please minimize freeze-thaw cycles.
Shipping	This product is provided as liquid. It is shipped at frozen temperature with blue ice/ gel packs. Upon receipt, store it immediately at < - 20°C.
Formulation	Supplied as a 0.2 µm filtered solution of 20mM Tris-HCl, 100mM NaCl, 1mM DTT, 30% Glycerol, pH 8.0.

Data



> 95 % as determined by reducing SDS-PAGE.

Background

Phenazine Biosynthesis-Like Domain-Containing protein (PBLD) belongs to the phenazine biosynthesis-like protein (PhzF) family, which is expressed in most tissues. PBLD takes part in the MAPK signaling pathway, and is involved in multiple basic cellular functions. The expression of PBLD can be increased in several disease processes, including insulin resistance, folate deficiency and hypotension.

For Research Use Only

Toll-free: 1-888-852-8623
Web: www.elabscience.com

Tel: 1-832-243-6086
Email: techsupport@elabscience.com

Fax: 1-832-243-6017