

## Recombinant Human Neurotensin Protein (Fc Tag)

**Catalog Number: PKSH030549**

**Note:** *Centrifuge before opening to ensure complete recovery of vial contents.*

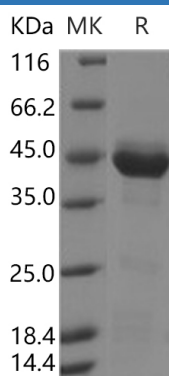
### Description

<b>Species</b>	Human
<b>Source</b>	HEK293 Cells-derived Human Neurotensin protein Met 1-Leu148, with an C-terminal hFc
<b>Calculated MW</b>	41.0 kDa
<b>Accession</b>	NP_006174.1
<b>Bio-activity</b>	Not validated for activity

### Properties

<b>Purity</b>	> 85 % as determined by reducing SDS-PAGE.
<b>Endotoxin</b>	< 1.0 EU per µg of the protein as determined by the LAL method.
<b>Storage</b>	Generally, lyophilized proteins are stable for up to 12 months when stored at -20 to -80°C. Reconstituted protein solution can be stored at 4-8°C for 2-7 days. Aliquots of reconstituted samples are stable at < -20°C for 3 months.
<b>Shipping</b>	This product is provided as lyophilized powder which is shipped with ice packs.
<b>Formulation</b>	Lyophilized from sterile PBS, pH 7.4 Normally 5% - 8% trehalose, mannitol and 0.01% Tween 80 are added as protectants before lyophilization. Please refer to the specific buffer information in the printed manual.
<b>Reconstitution</b>	Please refer to the printed manual for detailed information.

### Data



> 85 % as determined by reducing SDS-PAGE.

### Background

DPEP2 (MBD-2) belongs to the membrane-bound dipeptidase family. There are three members of this family as membrane-bound dipeptidase-1 (MBD-1), membrane-bound dipeptidase-2 (MBD-2) and membrane-bound dipeptidase-3 (MBD-3). MBD-2 is expressed at highest levels in lung, heart, and testis and at some what lower levels in spleen. MBD-2 is membrane-bound through a glycosylphosphatidyl-inositol linkage and probably is a metalloprotease which hydrolyzes leukotriene D4 (LTD4) into leukotriene E4 (LTE4). It is generally recognized that rapid cleavage of LTD4 is important in inactivating the broncho- and vaso-constrictive effects of cysteinyl LTs in asthmatic and inflammatory processes.

### For Research Use Only

Toll-free: 1-888-852-8623  
Web: [www.elabscience.com](http://www.elabscience.com)

Tel: 1-832-243-6086  
Email: [techsupport@elabscience.com](mailto:techsupport@elabscience.com)

Fax: 1-832-243-6017