

SSBP1 Polyclonal Antibody

catalog number: E-AB-15412

Note: Centrifuge before opening to ensure complete recovery of vial contents.

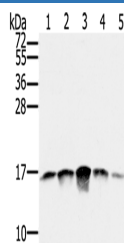
Description

Reactivity	Human;Mouse;Rat
Immunogen	Recombinant protein of human SSBP1
Host	Rabbit
Isotype	IgG
Purification	Affinity purification
Buffer	Phosphate buffered solution, pH 7.4, containing 0.05% stabilizer and 50% glycerol.

Applications

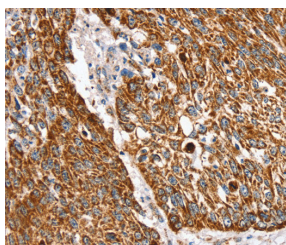
Applications	Recommended Dilution
WB	1:500-1:2000
IHC	1:25-1:100

Data

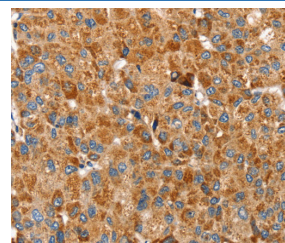


Western Blot analysis of PC3, A549, K562, A375 and hela cell using SSBP1 Polyclonal Antibody at dilution of 1:400

Calculated-MV:17 kDa



Immunohistochemistry of paraffin-embedded Human lung cancer using SSBP1 Polyclonal Antibody at dilution of 1:30



Immunohistochemistry of paraffin-embedded Human liver cancer using SSBP1 Polyclonal Antibody at dilution of 1:30

Preparation & Storage

Storage	Store at -20°C Valid for 12 months. Avoid freeze / thaw cycles.
Shipping	The product is shipped with ice pack, upon receipt, store it immediately at the temperature recommended.

Background

SSBP1 is a housekeeping gene involved in mitochondrial biogenesis (Tiranti et al., 1995 [PubMed 7789991]). It is also a subunit of a single-stranded DNA (ssDNA)-binding complex involved in the maintenance of genome stability.

For Research Use Only