

APC Anti-Mouse Ly6G Antibody[1A8]

Catalog Number: E-AB-F1108E

Note: Centrifuge before opening to ensure complete recovery of vial contents.

Description

Reactivity	Mouse
Host	Rat
Isotype	Rat IgG2a, κ
Clone No.	1A8
Isotype Control	APC Rat IgG2a, κ Isotype Control[2A3] [Product E-AB-F09832E]
Conjugation	APC
Conjugation Information	APC is designed to be excited by the Red (627-640 nm) laser and detected using an optical filter centered near 660 nm (e.g., a 660/20 nm bandpass filter).
Storage Buffer	Phosphate buffered solution, pH 7.2, containing 0.09% sodium azide and 1% BSA.

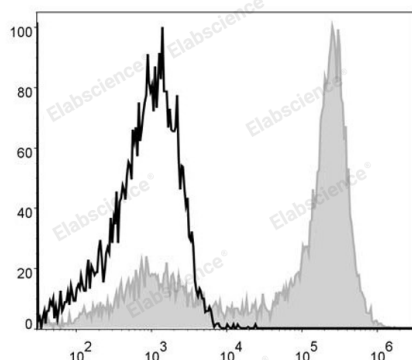
Applications

Recommended usage

FCM

Each lot of this antibody is quality control tested by flow cytometric analysis. **The amount of the reagent is suggested to be used 5 μL of antibody per test (million cells in 100 μL staining volume or per 100 μL of whole blood).** Please check your vial before the experiment. Since applications vary, the appropriate dilutions must be determined for individual use.

Data



C57BL/6 murine bone marrow cells are stained with APC Anti-Mouse Ly6G Antibody (filled gray histogram). Unstained bone marrow cells (empty black histogram) are used as control.

Preparation & Storage

Storage	Keep as concentrated solution. This product can be stored at 2-8°C for 12 months. Please protected from prolonged exposure to light and do not freeze.
Shipping	Ice bag

Antigen Information

Alternate Names	Ly-6G;Ly-6G.1;Ly6g;Lymphocyte antigen 6G
Uniprot ID	P35461
Gene ID	546644

For Research Use Only

Background

Lymphocyte antigen 6 complex, locus G (Ly-6G), a 21-25 kD GPI-anchored protein, is expressed on the majority of myeloid cells in bone marrow and peripheral granulocytes