

SMEK1 Polyclonal Antibody

Catalog Number:E-AB-62484

Note: Centrifuge before opening to ensure complete recovery of vial contents.

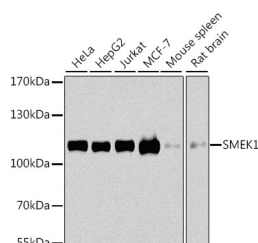
Description

Reactivity	Human,Mouse,Rat
Immunogen	Recombinant fusion protein of human SMEK1 (NP_001271210.1).
Host	Rabbit
Isotype	IgG
Purification	Affinity purification
Conjugation	Unconjugated
Formulation	PBS with 0.02% sodium azide, 50% glycerol, pH7.3.

Applications Recommended Dilution

WB	1:500-1:2000
IHC	1:50-1:100

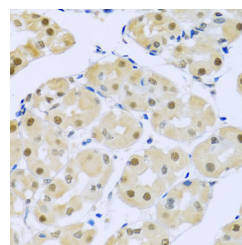
Data



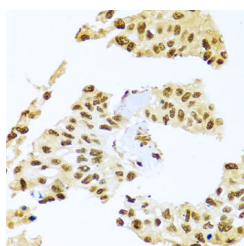
Western blot analysis of extracts of various cell lines using SMEK1 Polyclonal Antibody at dilution of 1:1000.

Observed Mw:110kDa

Calculated Mw:62kDa/67kDa/93kDa/95kDa



Immunohistochemistry of paraffin-embedded Human stomach using SMEK1 Polyclonal Antibody at dilution of 1:100 (40x lens).



Immunohistochemistry of paraffin-embedded Human lung cancer using SMEK1 Polyclonal Antibody at dilution of 1:100 (40x lens).

Preparation & Storage

Storage Store at -20°C. Avoid freeze / thaw cycles.

Background

PPP4R3A (Protein Phosphatase 4 Regulatory Subunit 3A) is a Protein Coding gene. Among its related pathways are Glucagon signaling pathway and Integrated Breast Cancer Pathway. An important paralog of this gene is PPP4R3B.

For Research Use Only

A Reliable Research Partner in Life Science and Medicine

Toll-free: 1-888-852-8623

Web: www.elabscience.com

Tel: 1-832-243-6086

Email: techsupport@elabscience.com

Fax: 1-832-243-6017