

PTPRN Polyclonal Antibody

Catalog Number: E-AB-52202



Note: Centrifuge before opening to ensure complete recovery of vial contents.

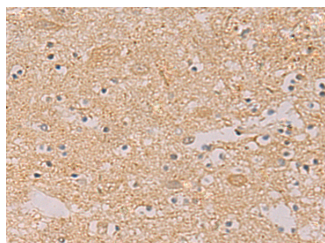
Description

Reactivity	Human, Mouse, Rat
Immunogen	Fusion protein of human PTPRN
Host	Rabbit
Isotype	IgG
Purification	Antigen affinity purification
Conjugation	Unconjugated
Formulation	PBS with 0.05% NaN ₃ and 40% Glycerol, pH7.4

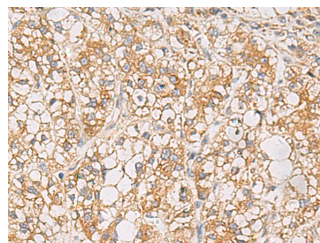
Applications Recommended Dilution

IHC	1:50-1:200
ELISA	1:5000-1:10000

Data



Immunohistochemistry of paraffin-embedded Human brain tissue using PTPRN Polyclonal Antibody at dilution of 1:55 (x200)



Immunohistochemistry of paraffin-embedded Human liver cancer tissue using PTPRN Polyclonal Antibody at dilution of 1:55 (x200)

Preparation & Storage

Storage Store at -20°C. Avoid freeze / thaw cycles.

Background

IA-2/PTPRN is a member of the protein tyrosine phosphatase (PTP) family, which contains a transmembrane region, an intracellular PTP-like domain and an extracellular N-terminus. Experiments found that IA-2/PTPRN localizes to secretory granules and is exclusively expressed in neuroendocrine cells (including pancreatic islets cell). IA-2/PTPRN was found to be a major autoantigen in insulin-dependent diabetes mellitus and the detection of autoantibodies against IA-2/PTPRN is commonly used as a diabetes diagnosis marker.

For Research Use Only

A Reliable Research Partner in Life Science and Medicine

Toll-free: 1-888-852-8623

Web: www.elabscience.com

Tel: 1-832-243-6086

Email: techsupport@elabscience.com

Fax: 1-832-243-6017