

## Recombinant Phospho-CDC37 (Ser13) Monoclonal Antibody

catalog number: **AN301045L**

**Note:** Centrifuge before opening to ensure complete recovery of vial contents.

### Description

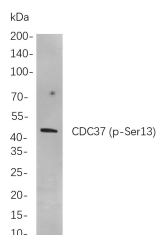
<b>Reactivity</b>	Human;Mouse;Rat
<b>Immunogen</b>	A synthetic peptide corresponding to residues around (Ser13) of Human Phospho-CDC37
<b>Host</b>	Rabbit
<b>Isotype</b>	IgG,k
<b>Clone</b>	B796
<b>Purification</b>	Protein A
<b>Buffer</b>	PBS, 50% glycerol, 0.05% Proclin 300, 0.05% protein protectant.

### Applications

### Recommended Dilution

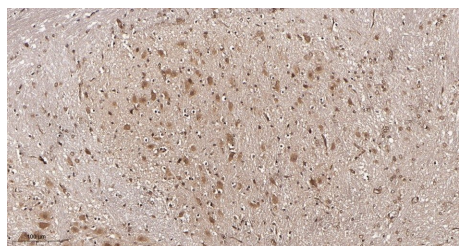
<b>IHC</b>	1:400-1000
<b>WB</b>	1:1000-5000

### Data

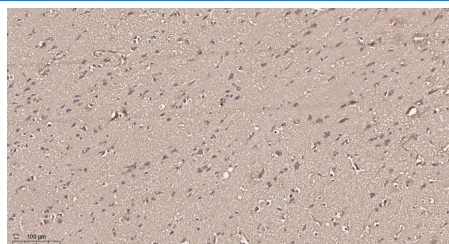


Western Blot with Recombinant Phospho-CDC37 (Ser13) Monoclonal Antibody at dilution of 1:1000 dilution. Lane A: PC-12 cells.

**Observed-MW:44 kDa**  
**Calculated-MW:44 kDa**



Immunohistochemistry of paraffin-embedded mouse brain tissue using Recombinant Phospho-CDC37 (Ser13) Monoclonal Antibody at dilution of 1:200.



Immunohistochemistry of paraffin-embedded human brain tissue using Recombinant Phospho-CDC37 (Ser13) Monoclonal Antibody at dilution of 1:200.

### Preparation & Storage

<b>Storage</b>	Store at -20°C Valid for 12 months. Avoid freeze / thaw cycles.
<b>Shipping</b>	Ice bag

### Background

#### For Research Use Only

The protein encoded by this gene is highly similar to Cdc 37, a cell division cycle control protein of *Saccharomyces cerevisiae*. This protein is a molecular chaperone with specific function in cell signal transduction. It has been shown to form complex with Hsp90 and a variety of protein kinases including CDK4, CDK6, SRC, RAF-1, MOK, as well as eIF2 alpha kinases. It is thought to play a critical role in directing Hsp90 to its target kinases.

---

#### For Research Use Only

Toll-free: 1-888-852-8623  
Web: [www.elabscience.com](http://www.elabscience.com)

Tel: 1-832-243-6086  
Email: [techsupport@elabscience.com](mailto:techsupport@elabscience.com)

Fax: 1-832-243-6017

Rev. V1.1