

## Recombinant C2orf69 Monoclonal Antibody

catalog number: **AN300748L**

**Note:** Centrifuge before opening to ensure complete recovery of vial contents.

### Description

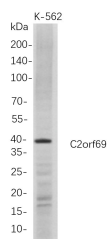
|                     |   |
|---------------------|---|
| <b>Reactivity</b>   | Human   |
| <b>Immunogen</b>    | Recombinant Human C2orf69 protein                               |
| <b>Host</b>         | Rabbit  |
| <b>Isotype</b>      | IgG, $\kappa$   |
| <b>Clone</b>        | B687  |
| <b>Purification</b> | Protein A   |
| <b>Buffer</b>       | PBS, 50% glycerol, 0.05% Proclin 300, 0.05% protein protectant. |

### Applications

### Recommended Dilution

|           |             |
|-----------|-------------|
| <b>WB</b> | 1:1000-5000 |
|-----------|-------------|

### Data



Western Blot with Recombinant C2orf69 Monoclonal Antibody at dilution of 1:1000 dilution. Lane A: K-562 whole cell lysate.

**Observed-MW:42 kDa**

### Preparation & Storage

|                 |   |
|-----------------|---|
| <b>Storage</b>  | Store at -20°C Valid for 12 months. Avoid freeze / thaw cycles. |
| <b>Shipping</b> | Ice bag   |

### Background

Involved in oxidative phosphorylation. Located in mitochondrion. Implicated in combined oxidative phosphorylation deficiency 53.

### For Research Use Only