

## Recombinant IRE1α Monoclonal Antibody

catalog number: **AN301344L**

**Note:** Centrifuge before opening to ensure complete recovery of vial contents.

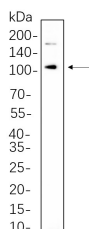
### Description

<b>Reactivity</b>	Human;Mouse;Rat
<b>Immunogen</b>	Recombinant Human IRE1α protein
<b>Host</b>	Rabbit
<b>Isotype</b>	IgG,κ
<b>Clone</b>	7A3
<b>Purification</b>	Protein A
<b>Buffer</b>	PBS, 50% glycerol, 0.05% Proclin 300, 0.05% protein protectant.

### Applications Recommended Dilution

<b>WB</b>	1:2000-1:10000
-----------	----------------

### Data



Western Blot with Recombinant IRE1α Monoclonal Antibody  
at dilution of 1:1000 dilution. Lane A: LnCap whole cell  
lysate.

**Observed-MW:110 kDa**  
**Calculated-MW:110 kDa**

### Preparation & Storage

<b>Storage</b>	Store at -20°C Valid for 12 months. Avoid freeze / thaw cycles.
<b>Shipping</b>	Ice bag

### Background

The protein encoded by this gene is the ER to nucleus signalling 1 protein, a human homologue of the yeast Ire1 gene product. This protein possesses intrinsic kinase activity and an endoribonuclease activity and it is important in altering gene expression as a response to endoplasmic reticulum-based stress signals.

### For Research Use Only