

Recombinant Hemopexin/HPX Monoclonal Antibody

catalog number: **AN300592P**

Note: Centrifuge before opening to ensure complete recovery of vial contents.

Description

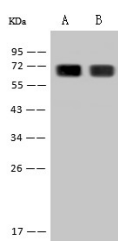
Reactivity	Rat
Immunogen	Recombinant Rat Hemopexin/HPX Protein
Host	Rabbit
Isotype	IgG
Clone	12B10
Purification	Protein A
Buffer	0.2 µm filtered solution in PBS

Applications

Recommended Dilution

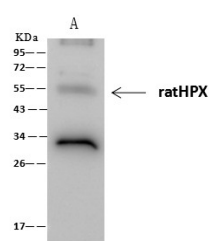
WB	1:500-1:2000
IP	5-10 µL/mg of lysate

Data



Western Blot with HPX Monoclonal Antibody at dilution of 1:500. Lane A: Rat kidney tissue lysate, Lane B: Rat spleen tissue lysate, Lysates/proteins at 30 µg per lane.

Observed-MW:70 kDa
Calculated-MW:52 kDa



Immunoprecipitation analysis using 2 µL anti-ratHPX Monoclonal Antibody and 60 µg of Immunomagnetic beads Protein A/G. Western blot was performed from the immunoprecipitate using HPX Monoclonal Antibody at a dilution of 1:100. Lane A:0.5 mg HepG2 Whole Cell Lysate

Observed-MW:70 kDa
Calculated-MW:52 kDa

Preparation & Storage

Storage	This antibody can be stored at 2°C-8°C for one month without detectable loss of activity. Antibody products are stable for twelve months from date of receipt when stored at -20°C to -80°C. Preservative-Free. Avoid repeated freeze-thaw cycles.
Shipping	Ice bag

Background

Hemopexin (HPX) is the plasma protein responsible for scavenging heme, thus preventing heme-mediated oxidative stress and heme-bound iron loss. In addition, hemopexin blocks heme activation of immune receptors and vascular inflammatory processes. It is mainly expressed in liver, the synthesis of which is induced after inflammation. Alterations of plasma hemopexin level have been linked to disorders like atherosclerosis and inflammatory diseases.

For Research Use Only

Toll-free: 1-888-852-8623
Web: www.elabscience.com

Tel: 1-832-243-6086
Email: techsupport@elabscience.com

Fax: 1-832-243-6017

Rev. V1.0