

## Recombinant Phospho-SMAD5 (Ser463, Ser465) Monoclonal Antibody

catalog number: **AN300655L**

**Note:** Centrifuge before opening to ensure complete recovery of vial contents.

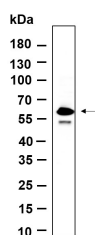
### Description

<b>Reactivity</b>	Human;Mouse;Rat
<b>Immunogen</b>	A synthetic peptide corresponding to residues around (Ser463, Ser465)of Human Phospho-SMAD5
<b>Host</b>	Rabbit
<b>Isotype</b>	IgG, $\kappa$
<b>Clone</b>	B590
<b>Purification</b>	Protein A
<b>Buffer</b>	PBS, 50% glycerol, 0.05% Proclin 300, 0.05% protein protectant.

### Applications Recommended Dilution

<b>IHC</b>	1:200-1:1000
<b>WB</b>	1:2000-1:10000
<b>IF</b>	1:200-1:1000
<b>ELISA</b>	1:5000-1:20000

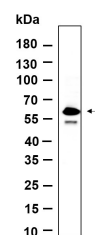
### Data



Western Blot with Recombinant Phospho-SMAD5 (Ser463, Ser465) Monoclonal Antibody at dilution of 1:1000 dilution.

Lane A: HeLa lysate.

**Observed-MW:60 kDa**  
**Calculated-MW:52 kDa**



Western Blot with Recombinant Phospho-SMAD5 (Ser463, Ser465) Monoclonal Antibody at dilution of 1:1000 dilution.

Lane A: MCF7 whole cell lysate.

**Observed-MW:60 kDa**  
**Calculated-MW:52 kDa**

### Preparation & Storage

<b>Storage</b>	Store at -20°C Valid for 12 months. Avoid freeze / thaw cycles.
<b>Shipping</b>	Ice bag

### Background

The protein encoded by this gene is involved in the transforming growth factor beta signaling pathway that results in an inhibition of the proliferation of hematopoietic progenitor cells. The encoded protein is activated by bone morphogenetic proteins type 1 receptor kinase, and may be involved in cancer. Alternative splicing results in multiple transcript variants.

### For Research Use Only