

Recombinant CD68 Monoclonal Antibody

catalog number: **AN300041P**

Note: *Centrifuge before opening to ensure complete recovery of vial contents.*

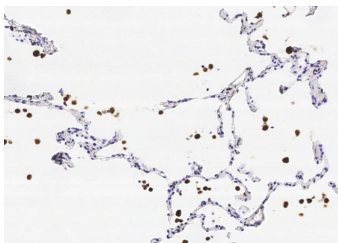
Description

Reactivity	Human;Cynomolgus
Immunogen	Recombinant Human CD68 Protein
Host	Rabbit
Isotype	IgG
Clone	A1151
Purification	Protein A
Buffer	0.2 µm filtered solution in PBS

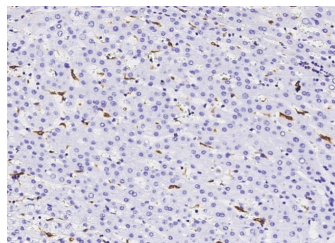
Applications Recommended Dilution

IHC-P	1:60-1:500
--------------	------------

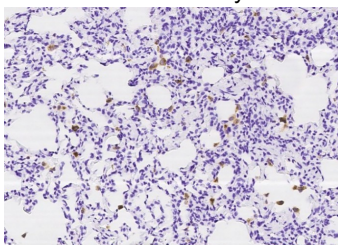
Data



Immunohistochemistry of paraffin-embedded human lung using CD68 Monoclonal Antibody at dilution of 1:200.



Immunohistochemistry of paraffin-embedded human liver using CD68 Monoclonal Antibody at dilution of 1:200.



Immunohistochemistry of paraffin-embedded cynomolgus lung using CD68 Monoclonal Antibody at dilution of 1:60.

Preparation & Storage

Storage	This antibody can be stored at 2°C-8°C for one month without detectable loss of activity. Antibody products are stable for twelve months from date of receipt when stored at -20°C to -80°C. Preservative-Free. Avoid repeated freeze-thaw cycles.
Shipping	Ice bag

Background

This gene encodes a 110-kD transmembrane glycoprotein that is highly expressed by human monocytes and tissue macrophages. It is a member of the lysosomal/endosomal-associated membrane glycoprotein (LAMP) family. The protein primarily localizes to lysosomes and endosomes with a smaller fraction circulating to the cell surface. It is a type I integral membrane protein with a heavily glycosylated extracellular domain and binds to tissue- and organ-specific lectins or selectins. The protein is also a member of the scavenger receptor family. Scavenger receptors typically function to clear cellular debris, promote phagocytosis, and mediate the recruitment and activation of macrophages. Alternative splicing results in multiple transcripts encoding different isoforms.

For Research Use Only