

Recombinant Cathepsin L1/CTSL1 Monoclonal Antibody

catalog number: **AN300341P**

Note: Centrifuge before opening to ensure complete recovery of vial contents.

Description

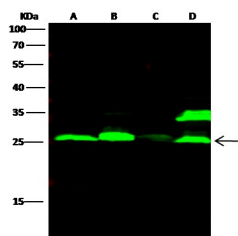
Reactivity	Human
Immunogen	Recombinant Human Cathepsin L/CTSL/CTSL1 protein
Host	Rabbit
Isotype	IgG
Clone	6G10
Purification	Protein A
Buffer	0.2 µm filtered solution in PBS

Applications

Recommended Dilution

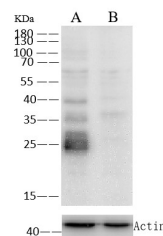
WB	1:500-1:2000
-----------	--------------

Data



Western Blot with CTSL1 Monoclonal Antibody at dilution of 1:500 dilution. Lane A: HepG2 Whole Cell Lysate, Lane B: A549 Whole Cell Lysate, Lane C: HCT116 Whole Cell Lysate, Lane D: U87MG Whole Cell Lysate, Lysates/proteins at 30 µg per lane.

Observed-MW:25 kDa
Calculated-MW:36 kDa



Western Blot with CTSL1 Monoclonal Antibody at dilution of 1:500 dilution. Lane A: A549 Whole Cell Lysate, Lane B: CTSL1 konckout A549 Whole Cell Lysate, Lysates/proteins at 30 µg per lane.

Observed-MW:25 kDa
Calculated-MW:36 kDa

Preparation & Storage

Storage	This antibody can be stored at 2°C-8°C for one month without detectable loss of activity. Antibody products are stable for twelve months from date of receipt when stored at -20°C to -80°C. Preservative-Free. Avoid repeated freeze-thaw cycles.
Shipping	Ice bag

Background

The protein encoded by this gene is a lysosomal cysteine proteinase that plays a major role in intracellular protein catabolism. Its substrates include collagen and elastin, as well as alpha-1 protease inhibitor, a major controlling element of neutrophil elastase activity. The encoded protein has been implicated in several pathologic processes, including myofibril necrosis in myopathies and in myocardial ischemia, and in the renal tubular response to proteinuria. This protein, which is a member of the peptidase C1 family, is a dimer composed of disulfide-linked heavy and light chains, both produced from a single protein precursor. Multiple alternatively spliced transcript variants have been found for this gene.

For Research Use Only

Toll-free: 1-888-852-8623
Web: www.elabscience.com

Tel: 1-832-243-6086
Email: techsupport@elabscience.com

Fax: 1-832-243-6017

Rev. V1.0