

## FITC Anti-Rat CD8b Antibody[341]

Catalog Number: AN00667C

Note: Centrifuge before opening to ensure complete recovery of vial contents.

### Description

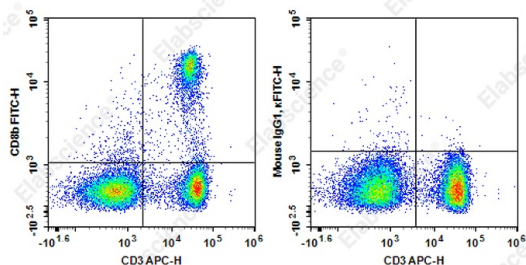
Reactivity	Rat
Host	Mouse
Isotype	Mouse IgG1, κ
Clone No.	341
Isotype Control	FITC Mouse IgG1, κ Isotype Control[MOPC-21] [Product E-AB-F09792C]
Conjugation	FITC
Conjugation Information	FITC is designed to be excited by the Blue laser (488 nm) and detected using an optical filter centered near 530 nm (e.g., a 525/40 nm bandpass filter).
Storage Buffer	Phosphate buffered solution, pH 7.2, containing 0.09% stabilizer.

### Applications

### Recommended usage

FCM	Each lot of this antibody is quality control tested by flow cytometric analysis. <b>The amount of the reagent is suggested to be used 5 μL of antibody per test (million cells in 100 μL staining volume or per 100 μL of whole blood).</b> Please check your vial before the experiment. Since applications vary, the appropriate dilutions must be determined for individual use.
-----	-------------------------------------------------------------------------------------------------------------------------------------------------------------------------------------------------------------------------------------------------------------------------------------------------------------------------------------------------------------------------------------

### Data



Staining of Rat splenocytes cells with APC Anti-Human CD3 Antibody and FITC Anti-Rat CD8b Antibody[341] (left) or FITC Mouse IgG1, κ Isotype Control (right). Total viable cells were used for analysis.

### Preparation & Storage

Storage	Keep as concentrated solution. This product can be stored at 2-8°C for 24 months. Please protected from prolonged exposure to light and do not freeze.
Shipping	Ice bag

### Antigen Information

Alternate Names	CD8;Lyt3
Uniprot ID	P05541
Gene ID	24931

### For Research Use Only

## Background

CD8b antigen is also known as T8, Lyt2, Ly-2, and CD8 $\beta$ . It is a member of the immunoglobulin superfamily expressed on most thymocytes, some mature T cell subsets, and macrophages. CD8b forms heterodimers with the CD8 $\alpha$  chain (CD8a). CD8 is an antigen co-receptor on T cells that interacts with MHC class I on antigen-presenting cells or epithelial cells. CD8 participates in T cell activation through its association with the T cell receptor complex and protein tyrosine kinase lck (p56lck).