

PARP/PARP1 Monoclonal Antibody

catalog number: AN200247P

Note: Centrifuge before opening to ensure complete recovery of vial contents.

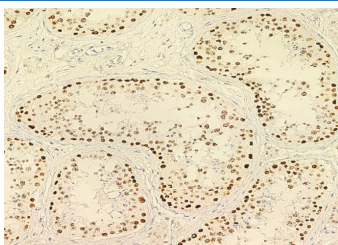
Description

Reactivity	Human
Immunogen	E. coli-derived Human PARP/PARP1 fragment
Host	Mouse
Isotype	IgG2a
Clone	7B3
Purification	Protein A
Buffer	0.2 µm filtered solution in PBS

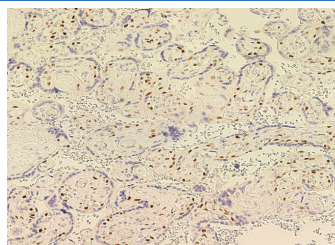
Applications Recommended Dilution

IHC-P	1:200-1:2000
--------------	--------------

Data



Immunohistochemistry of paraffin-embedded human testis using PARP/PARP1 Monoclonal Antibody at dilution of 1:500.



Immunohistochemistry of paraffin-embedded human placenta using PARP/PARP1 Monoclonal Antibody at dilution of 1:500.

Preparation & Storage

Storage	This antibody can be stored at 2°C-8°C for one month without detectable loss of activity. Antibody products are stable for twelve months from date of receipt when stored at -20°C to -80°C. Preservative-Free. Avoid repeated freeze-thaw cycles.
Shipping	Ice bag

Background

This gene encodes a chromatin-associated enzyme, poly(ADP-ribose)transferase, which modifies various nuclear proteins by poly(ADP-ribose)ation. The modification is dependent on DNA and is involved in the regulation of various important cellular processes such as differentiation, proliferation, and tumor transformation and also in the regulation of the molecular events involved in the recovery of cell from DNA damage. In addition, this enzyme may be the site of mutation in Fanconi anemia, and may participate in the pathophysiology of type I diabetes.

For Research Use Only