

ERN1/IRE1 Monoclonal Antibody

catalog number: AN200216P

Note: *Centrifuge before opening to ensure complete recovery of vial contents.*

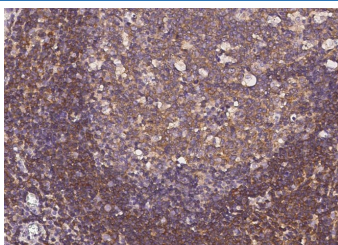
Description

Reactivity	Human
Immunogen	Recombinant Human ERN1/IRE1 protein
Host	Mouse
Isotype	IgG2b
Clone	5D4
Purification	Protein A
Buffer	0.2 µm filtered solution in PBS

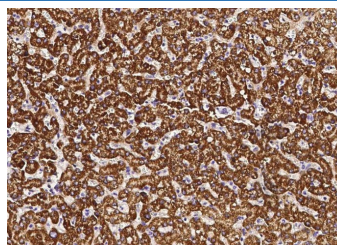
Applications Recommended Dilution

IHC-P	1:100-1:500
--------------	-------------

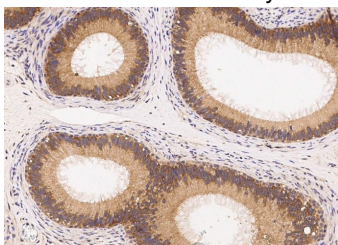
Data



Immunohistochemistry of paraffin-embedded human tonsil using ERN1/IRE1 Monoclonal Antibody at dilution of 1:300.



Immunohistochemistry of paraffin-embedded human liver using ERN1/IRE1 Monoclonal Antibody at dilution of 1:300.



Immunohistochemistry of paraffin-embedded human epididymis using ERN1/IRE1 Monoclonal Antibody at dilution of 1:100.

Preparation & Storage

Storage	This antibody can be stored at 2°C-8°C for one month without detectable loss of activity. Antibody products are stable for twelve months from date of receipt when stored at -20°C to -80°C. Preservative-Free. Avoid repeated freeze-thaw cycles.
Shipping	Ice bag

Background

The protein encoded by this gene is the ER to nucleus signalling 1 protein, a human homologue of the yeast Ire1 gene product. This protein possesses intrinsic kinase activity and an endoribonuclease activity and it is important in altering gene expression as a response to endoplasmic reticulum-based stress signals.

For Research Use Only