

Recombinant CD133 Monoclonal Antibody

catalog number: **AN301089L**

Note: Centrifuge before opening to ensure complete recovery of vial contents.

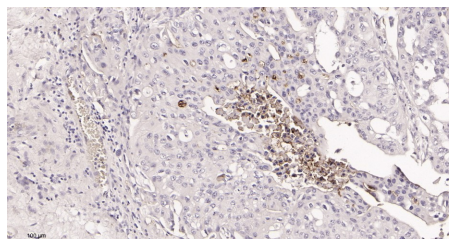
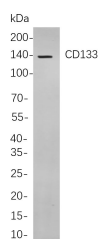
Description

| | |
|---------------------|---|
| Reactivity | Human |
| Immunogen | Recombinant Human CD133 protein |
| Host | Rabbit |
| Isotype | IgG, κ |
| Clone | 6G13 |
| Purification | Protein A |
| Buffer | PBS, 50% glycerol, 0.05% Proclin 300, 0.05% protein protectant. |

Applications Recommended Dilution

| | |
|------------|-------------|
| IHC | 1:20-100 |
| WB | 1:1000-5000 |

Data



Western Blot with Recombinant CD133 Monoclonal Antibody Immunohistochemistry of paraffin-embedded human bladder carcinoma tissue using Recombinant CD133 Monoclonal Antibody at dilution of 1:1000 dilution. Lane A: Caco-2 cells. carcinoma tissue using Recombinant CD133 Monoclonal Antibody at dilution of 1:200.

Observed-MW:133 kDa
Calculated-MW:97 kDa

Preparation & Storage

| | |
|-----------------|---|
| Storage | Store at -20°C Valid for 12 months. Avoid freeze / thaw cycles. |
| Shipping | Ice bag |

Background

This gene encodes a pentaspan transmembrane glycoprotein. The protein localizes to membrane protrusions and is often expressed on adult stem cells, where it is thought to function in maintaining stem cell properties by suppressing differentiation. Mutations in this gene have been shown to result in retinitis pigmentosa and Stargardt disease. Expression of this gene is also associated with several types of cancer. This gene is expressed from at least five alternative promoters that are expressed in a tissue-dependent manner. Multiple transcript variants encoding different isoforms have been found for this gene.

For Research Use Only

Toll-free: 1-888-852-8623
Web: www.elabscience.com

Tel: 1-832-243-6086
Email: techsupport@elabscience.com

Fax: 1-832-243-6017

Rev. V1.0