

## Recombinant Hsp70 Monoclonal Antibody

catalog number: **AN301055L**

**Note:** Centrifuge before opening to ensure complete recovery of vial contents.

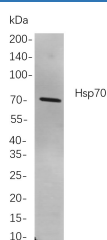
### Description

<b>Reactivity</b>	Human;Mouse;Rat
<b>Immunogen</b>	Recombinant Human Hsp70 protein
<b>Host</b>	Rabbit
<b>Isotype</b>	IgG, $\kappa$
<b>Clone</b>	B810
<b>Purification</b>	Protein A
<b>Buffer</b>	PBS, 50% glycerol, 0.05% Proclin 300, 0.05% protein protectant.

### Applications

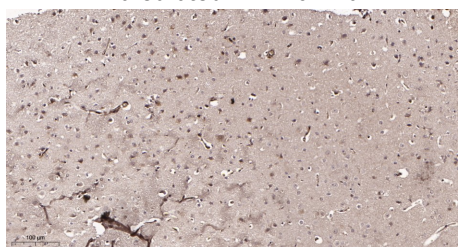
Applications	Recommended Dilution
IHC	1:400-1000
WB	1:1000-5000
IF	1:200-1000
ELISA	1:5000-20000

### Data

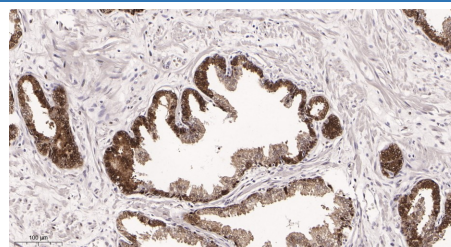


Western Blot with Recombinant Hsp70 Monoclonal Antibody at dilution of 1:1000 dilution. Lane A: A172 cells.

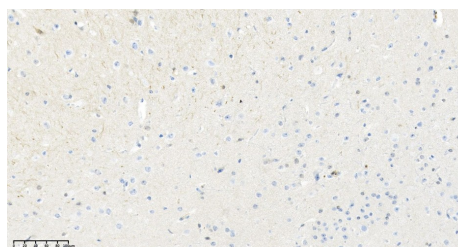
**Observed-MW:70 kDa**  
**Calculated-MW:70 kDa**



Immunohistochemistry of paraffin-embedded mouse brain tissue using Recombinant Hsp70 Monoclonal Antibody at dilution of 1:200.



Immunohistochemistry of paraffin-embedded human prostate tissue using Recombinant Hsp70 Monoclonal Antibody at dilution of 1:200.



Immunohistochemistry of paraffin-embedded mouse brain tissue using Recombinant Hsp70 Monoclonal Antibody at dilution of 1:200.

### Preparation & Storage

<b>Storage</b>	Store at -20°C Valid for 12 months. Avoid freeze / thaw cycles.
<b>Shipping</b>	Ice bag

### Background

### For Research Use Only

Toll-free: 1-888-852-8623  
Web: [www.elabscience.com](http://www.elabscience.com)

Tel: 1-832-243-6086  
Email: [techsupport@elabscience.com](mailto:techsupport@elabscience.com)

Fax: 1-832-243-6017

Rev. V1.2

This intronless gene encodes a 70kDa heat shock protein which is a member of the heat shock protein 70 family. In conjunction with other heat shock proteins, this protein stabilizes existing proteins against aggregation and mediates the folding of newly translated proteins in the cytosol and in organelles. It is also involved in the ubiquitin-proteasome pathway through interaction with the AU-rich element RNA-binding protein 1. The gene is located in the major histocompatibility complex class III region, in a cluster with two closely related genes which encode similar proteins.