

Recombinant E-Selectin/CD62e/SELE Monoclonal Antibody

catalog number: **AN300321P**

Note: *Centrifuge before opening to ensure complete recovery of vial contents.*

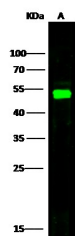
Description

Reactivity	Human
Immunogen	Recombinant Human CD62E protein
Host	Rabbit
Isotype	IgG
Clone	8D10
Purification	Protein A
Buffer	0.2 µm filtered solution in PBS

Applications Recommended Dilution

WB	1:500-1:2000
-----------	--------------

Data



Western Blot with CD62E Monoclonal Antibody at dilution of 1:500 dilution. Lane A: Jurkat Whole Cell Lysate, Lysates/proteins at 30 µg per lane.

Observed-MW:51 kDa

Calculated-MW:67 kDa

Preparation & Storage

Storage	This antibody can be stored at 2°C-8°C for one month without detectable loss of activity. Antibody products are stable for twelve months from date of receipt when stored at -20°C to -80°C. Preservative-Free. Avoid repeated freeze-thaw cycles.
Shipping	Ice bag

Background

E-Selectin, also known as Endothelial Leukocyte Adhesion Molecule 1 (ELAM-1), and Leukocyte-Endothelial Cell Adhesion Molecule 2 (LECAM-2), has been designated CD62E. It is a cell-surface glycoprotein expressed by activated endothelium and it mediates the adhesion of blood neutrophils.

For Research Use Only