

## Recombinant KRT5 Monoclonal Antibody

**catalog number: AN300109P**

**Note:** Centrifuge before opening to ensure complete recovery of vial contents.

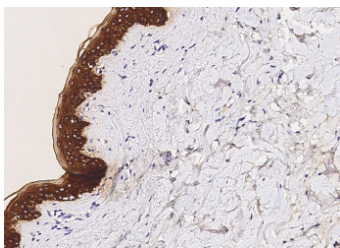
### Description

<b>Reactivity</b>	Human
<b>Immunogen</b>	A synthetic peptide corresponding to the center region of the human KRT5
<b>Host</b>	Rabbit
<b>Isotype</b>	IgG
<b>Clone</b>	12F4
<b>Purification</b>	Protein A
<b>Buffer</b>	0.2 µm filtered solution in PBS

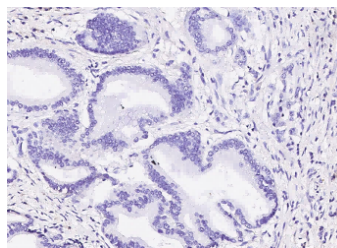
### Applications Recommended Dilution

<b>IHC-P</b>	1:100-1:500
--------------	-------------

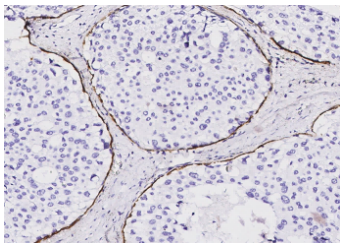
### Data



Immunohistochemistry of paraffin-embedded human skin using KRT5 Monoclonal Antibody at dilution of 1:200.



Immunohistochemistry of paraffin-embedded human gastric cancer using KRT5 Monoclonal Antibody at dilution of 1:200.



Immunohistochemistry of paraffin-embedded human breast carcinoma using KRT5 Monoclonal Antibody at dilution of 1:200.

### Preparation & Storage

<b>Storage</b>	This antibody can be stored at 2°C-8°C for one month without detectable loss of activity. Antibody products are stable for twelve months from date of receipt when stored at -20°C to -80°C. Preservative-Free. Avoid repeated freeze-thaw cycles.
<b>Shipping</b>	Ice bag

### Background

### For Research Use Only

The protein encoded by this gene is a member of the keratin gene family. The type II cytokeratins consist of basic or neutral proteins which are arranged in pairs of heterotypic keratin chains coexpressed during differentiation of simple and stratified epithelial tissues. This type II cytokeratin is specifically expressed in the basal layer of the epidermis with family member KRT14. Mutations in these genes have been associated with a complex of diseases termed epidermolysis bullosa simplex. The type II cytokeratins are clustered in a region of chromosome 12q12-q10.