

S100A10 Monoclonal Antibody

catalog number: **AN200074P**

Note: Centrifuge before opening to ensure complete recovery of vial contents.

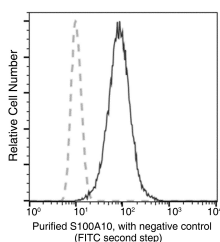
Description

Reactivity	Human
Immunogen	Recombinant Human S100A10 protein
Host	Mouse
Isotype	IgG1
Clone	A922
Purification	Protein A
Buffer	0.2 µm filtered solution in PBS

Applications Recommended Dilution

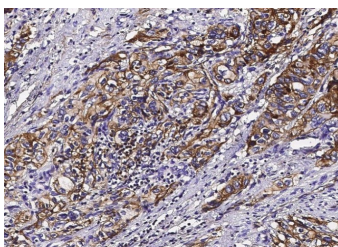
IHC-P	1:50-1:200
ICC/IF	1:20-1:100
FCM	1:25-1:100

Data

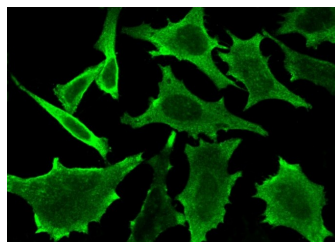


Flow cytometric analysis of Human S100A10 expression on HT29 cells. The cells were stained with purified anti-Human S100A10, then a FITC-conjugated second step antibody.

The fluorescence histograms were derived from gated events with the forward and side light-scatter characteristics of intact cells.

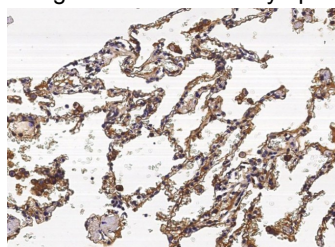


Immunohistochemistry of paraffin-embedded human renal carcinoma using S100A10 Monoclonal Antibody at dilution of 1:60.



Immunofluorescence analysis of S100A10 in HeLa cells. Cells were fixed with 4% PFA, permeabilized with 0.1% Triton X-100 in PBS, blocked with 10% serum, and

incubated with mouse anti-Human S100A10 Monoclonal Antibody (dilution ratio 1:60) at 4°C overnight. Then cells were stained with the Alexa Fluor®488-conjugated Goat Anti-mouse IgG secondary antibody (green). Positive staining was localized to Cytoplasm.



Immunohistochemistry of paraffin-embedded human lung tissue using S100A10 Monoclonal Antibody at dilution of 1:60.

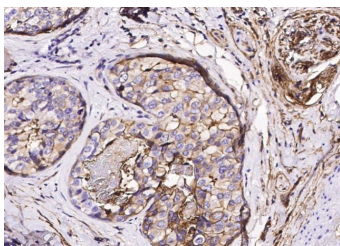
For Research Use Only

Toll-free: 1-888-852-8623
Web: www.elabscience.com

Tel: 1-832-243-6086
Email: techsupport@elabscience.com

Fax: 1-832-243-6017

Rev. V1.2



Immunohistochemistry of paraffin-embedded human breast carcinoma using S100A10 Monoclonal Antibody at dilution of 1:60.

Preparation & Storage

Storage

This antibody can be stored at 2°C-8°C for one month without detectable loss of activity. Antibody products are stable for twelve months from date of receipt when stored at -20°C to -80°C. Preservative-Free. Avoid repeated freeze-thaw cycles.

Shipping

Ice bag

Background

The protein encoded by this gene is a member of the S100 family of proteins containing 2 EF-hand calcium-binding motifs. S100 proteins are localized in the cytoplasm and/or nucleus of a wide range of cells, and involved in the regulation of a number of cellular processes such as cell cycle progression and differentiation. S100 genes include at least 13 members which are located as a cluster on chromosome 1q18. This protein may function in exocytosis and endocytosis.

For Research Use Only

Toll-free: 1-888-852-8623
Web: www.elabscience.com

Tel: 1-832-243-6086
Email: techsupport@elabscience.com

Fax: 1-832-243-6017

Rev. V1.2