

Recombinant Lactate Dehydrogenase Isoenzyme V Monoclonal Antibody

catalog number: **AN301095L**

Note: *Centrifuge before opening to ensure complete recovery of vial contents.*

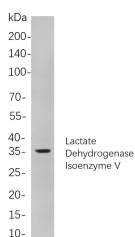
Description

Reactivity	Human;Mouse;Rat
Immunogen	Recombinant Human Lactate Dehydrogenase Isoenzyme V protein
Host	Rabbit
Isotype	IgG, κ
Clone	B850
Purification	Protein A
Buffer	PBS, 50% glycerol, 0.05% Proclin 300, 0.05% protein protectant.

Applications

Applications	Recommended Dilution
IHC	1:200-1000
WB	1:500-2000
IF	1:200-1000
ELISA	1:5000-20000

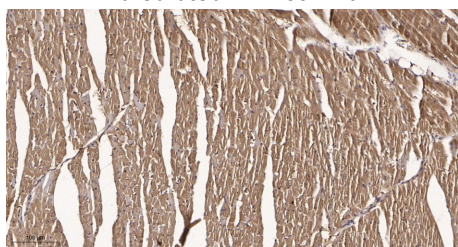
Data



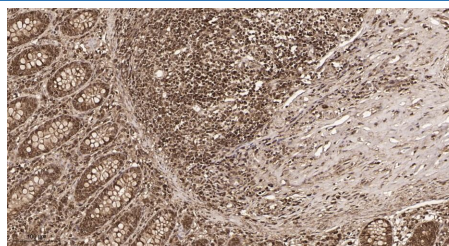
Western Blot with Recombinant Lactate Dehydrogenase Isoenzyme V Monoclonal Antibody at dilution of 1:1000 dilution. Lane A: A431 cells.

Observed-MW:36 kDa

Calculated-MW:36 kDa



Immunohistochemistry of paraffin-embedded mouse heart tissue using Recombinant Lactate Dehydrogenase Isoenzyme V Monoclonal Antibody at dilution of 1:200.



Immunohistochemistry of paraffin-embedded human appendix tissue using Recombinant Lactate Dehydrogenase Isoenzyme V Monoclonal Antibody at dilution of 1:200.

Preparation & Storage

Storage	Store at -20°C Valid for 12 months. Avoid freeze / thaw cycles.
Shipping	Ice bag

Background

For Research Use Only

Toll-free: 1-888-852-8623
Web: www.elabscience.com

Tel: 1-832-243-6086
Email: techsupport@elabscience.com

Fax: 1-832-243-6017

Rev. V1.2

The protein encoded by this gene catalyzes the conversion of L-lactate and NAD to pyruvate and NADH in the final step of anaerobic glycolysis. The protein is found predominantly in muscle tissue and belongs to the lactate dehydrogenase family. Mutations in this gene have been linked to exertional myoglobinuria. Multiple transcript variants encoding different isoforms have been found for this gene. The human genome contains several non-transcribed pseudogenes of this gene.