

Recombinant APE1 Monoclonal Antibody

catalog number: **AN301791L**

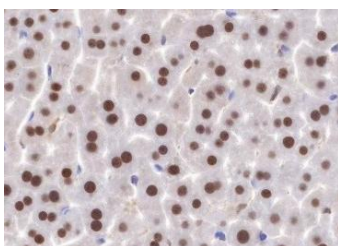
Note: *Centrifuge before opening to ensure complete recovery of vial contents.*

Description

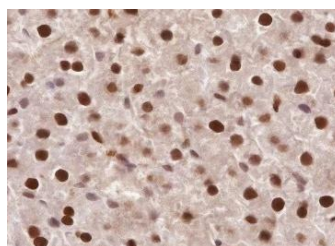
Reactivity	Human;Rat;Mouse
Immunogen	Recombinant human APE1 fragment
Host	Rabbit
Isotype	IgG, κ
Clone	A503
Purification	Protein A purified
Buffer	PBS, 50% glycerol, 0.05% Proclin 300, 0.05% protein protectant.

Applications Recommended Dilution

WB	1:1000-1:5000
IHC	1:200-1:1000
IP	1:50-1:100



Immunohistochemistry of paraffin-embedded Mouse liver using APE1 Monoclonal Antibody at dilution of 1:1000.



Immunohistochemistry of paraffin-embedded Rat liver using APE1 Monoclonal Antibody at dilution of 1:1000.

Preparation & Storage

Storage	Store at -20°C Valid for 12 months. Avoid freeze / thaw cycles.
Shipping	Ice bag

Background

APEX encodes the major AP endonuclease in human cells. It encodes the APEX endonuclease, a DNA repair enzyme with apurinic/apyrimidinic (AP) activity. Such AP activity sites occur frequently in DNA molecules by spontaneous hydrolysis, by DNA damaging agents or by DNA glycosylases that remove specific abnormal bases.

For Research Use Only