

Recombinant E-Cadherin Monoclonal Antibody

catalog number: **AN301701L**

Note: Centrifuge before opening to ensure complete recovery of vial contents.

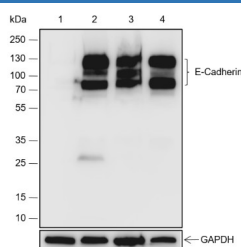
Description

Reactivity	Human;Rat;Mouse
Immunogen	Recombinant human E-Cadherin fragment
Host	Rabbit
Isotype	IgG, κ
Clone	A409
Purification	Protein A purified
Buffer	PBS, 50% glycerol, 0.05% Proclin 300, 0.05% protein protectant.

Applications

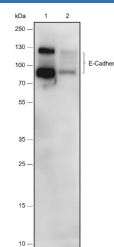
WB	1:2000-1:5000
IP	1:50-1:100

Data



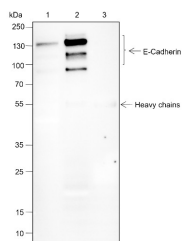
Western Blot with E-Cadherin Monoclonal Antibody at dilution of 1:5000. Lane 1: HeLa (Negative control), Lane 2: T-47D, Lane 3: MCF-7, Lane 4: HT-29

Observed-MW:90-120 kDa
Calculated-MW:97 kDa



Western Blot with E-Cadherin Monoclonal Antibody at dilution of 1:5000. Lane 1: Mouse stomach, Lane 2: Rat stomach

Observed-MW:90-120 kDa
Calculated-MW:97 kDa



Immunoprecipitation analysis using anti-E-Cadherin Monoclonal Antibody. Western blot was performed from the immunoprecipitate using E-Cadherin Monoclonal Antibody at a dilution of 1:100. Lane 1: 5% Input, Lane 2: E-Cadherin Monoclonal Antibody, Lane 3: Rabbit monoclonal IgG Isotype

Observed-MW:90-120 kDa
Calculated-MW:97 kDa

Preparation & Storage

Storage	Store at -20°C Valid for 12 months. Avoid freeze / thaw cycles.
Shipping	Ice bag

For Research Use Only

Background

Cadherins are calcium-dependent cell adhesion proteins. They preferentially interact with themselves in a homophilic manner in connecting cells; cadherins may thus contribute to the sorting of heterogeneous cell types. CDH1 is involved in mechanisms regulating cell-cell adhesions, mobility and proliferation of epithelial cells.

For Research Use Only

Toll-free: 1-888-852-8623
Web: www.elabscience.com

Tel: 1-832-243-6086
Email: techsupport@elabscience.com

Fax: 1-832-243-6017

Rev. V1.0