

Recombinant p27 KIP 1 Monoclonal Antibody

catalog number: **AN301021L**

Note: Centrifuge before opening to ensure complete recovery of vial contents.

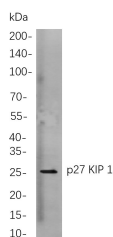
Description

Reactivity	Human;Mouse;Rat
Immunogen	Recombinant Human p27 KIP 1 protein
Host	Rabbit
Isotype	IgG, κ
Clone	B772
Purification	Protein A
Buffer	PBS, 50% glycerol, 0.05% Proclin 300, 0.05% protein protectant.

Applications

Applications	Recommended Dilution
IHC	1:200-1:1000
WB	1:1000-1:5000
IF	1:200-1:1000
ELISA	1:5000-1:20000
IP	1:50-1:200,

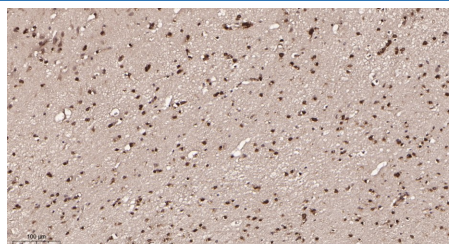
Data



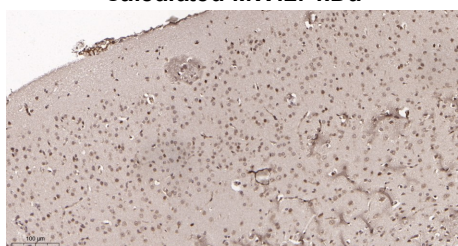
Western Blot with Recombinant p27 KIP 1 Monoclonal Antibody at dilution of 1:1000 dilution. Lane A: HeLa cells.

Observed-MW:27 kDa

Calculated-MW:27 kDa



Immunohistochemistry of paraffin-embedded human brain tissue using Recombinant p27 KIP 1 Monoclonal Antibody at dilution of 1:200.



Immunohistochemistry of paraffin-embedded mouse brain tissue using Recombinant p27 KIP 1 Monoclonal Antibody at dilution of 1:200.

Preparation & Storage

Storage	Store at -20°C Valid for 12 months. Avoid freeze / thaw cycles.
Shipping	Ice bag

Background

For Research Use Only

Toll-free: 1-888-852-8623
Web: www.elabscience.com

Tel: 1-832-243-6086
Email: techsupport@elabscience.com

Fax: 1-832-243-6017

Rev. V1.2

This gene encodes a cyclin-dependent kinase inhibitor, which shares a limited similarity with CDK inhibitor CDKN1A/p21. The encoded protein binds to and prevents the activation of cyclin E-CDK2 or cyclin D-CDK4 complexes, and thus controls the cell cycle progression at G1. The degradation of this protein, which is triggered by its CDK dependent phosphorylation and subsequent ubiquitination by SCF complexes, is required for the cellular transition from quiescence to the proliferative state. Mutations in this gene are associated with multiple endocrine neoplasia type IV (MEN4).