

## Endoglin/CD105 Monoclonal Antibody

catalog number: **AN200002P**

**Note:** Centrifuge before opening to ensure complete recovery of vial contents.

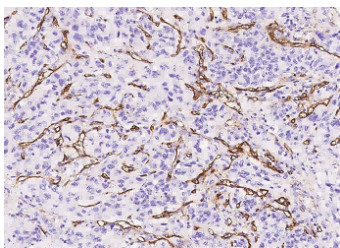
### Description

<b>Reactivity</b>	Human
<b>Immunogen</b>	Recombinant Human Endoglin / CD105 Protein
<b>Host</b>	Mouse
<b>Isotype</b>	IgG1
<b>Clone</b>	3P6
<b>Purification</b>	Protein A
<b>Buffer</b>	0.2 µm filtered solution in PBS

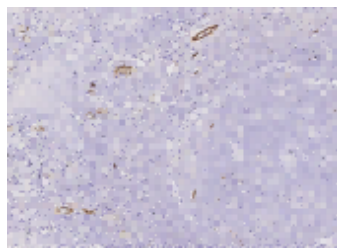
### Applications Recommended Dilution

<b>IHC-P</b>	1:200-1:2000
--------------	--------------

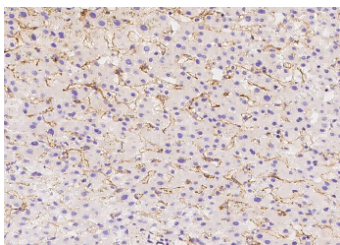
### Data



Immunohistochemistry of paraffin-embedded human renal carcinoma using Endoglin / CD105 Monoclonal Antibody at dilution of 1:500.



Immunohistochemistry of paraffin-embedded human tonsil using Endoglin / CD105 Monoclonal Antibody at dilution of 1:500.



Immunohistochemistry of paraffin-embedded human liver using Endoglin / CD105 Monoclonal Antibody at dilution of 1:500.

### Preparation & Storage

<b>Storage</b>	This antibody can be stored at 2°C-8°C for one month without detectable loss of activity. Antibody products are stable for twelve months from date of receipt when stored at -20°C to -80°C. Preservative-Free. Avoid repeated freeze-thaw cycles.
<b>Shipping</b>	Ice bag

### Background

### For Research Use Only

Endoglin (CD105) is a 90 kDa type I transmembrane glycoprotein of the zona pellucida (ZP) family of proteins (1-3). Endoglin and Betaglycan/T beta RIII are type III receptors for TGF beta superfamily ligands, sharing 71% aa identity in the transmembrane (TM) and cytoplasmic domains. Endoglin is highly expressed on proliferating vascular endothelial cells, chondrocytes, and syncytiotrophoblasts of term placenta, with lower amounts on hematopoietic, mesenchymal and neural crest stem cells, activated monocytes, and lymphoid and myeloid leukemic cells.