

Recombinant beta II Tubulin Monoclonal Antibody

catalog number: **AN301880L**

Note: Centrifuge before opening to ensure complete recovery of vial contents.

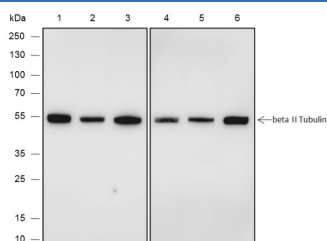
Description

Reactivity	Human;Rat;Mouse
Immunogen	Recombinant human beta II Tubulin fragment
Host	Rabbit
Isotype	IgG, κ
Clone	A592
Purification	Protein A purified
Buffer	PBS, 50% glycerol, 0.05% Proclin 300, 0.05% protein protectant.

Applications

Applications	Recommended Dilution
WB	1:500-1:2000
IHC	1:200-1:1000
IP	1:50-1:100

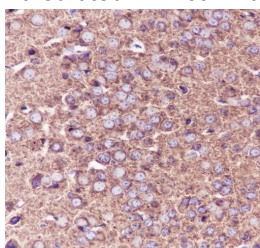
Data



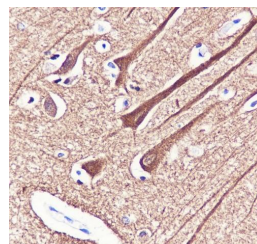
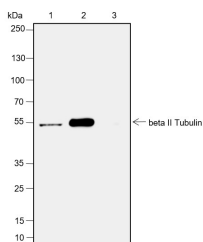
Western Blot with beta II Tubulin Monoclonal Antibody at dilution of 1:2000. Lane 1: 293T, Lane 2: HepG2, Lane 3: Jurkat, Lane 4: HeLa, Lane 5: NIH/3T3, Lane 6: PC-12

Observed-MW:55 kDa

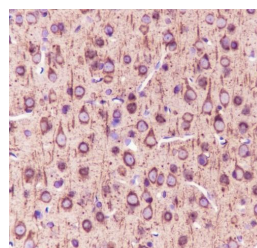
Calculated-MW:50 kDa



Immunohistochemistry of paraffin-embedded Mouse cerebrum using beta II Tubulin Monoclonal Antibody at dilution of 1:1000.



Immunohistochemistry of paraffin-embedded Human cerebrum using beta II Tubulin Monoclonal Antibody at dilution of 1:1000.



Immunohistochemistry of paraffin-embedded Rat cerebrum using beta II Tubulin Monoclonal Antibody at dilution of 1:1000.

For Research Use Only

Toll-free: 1-888-852-8623
Web: www.elabscience.com

Tel: 1-832-243-6086
Email: techsupport@elabscience.com

Fax: 1-832-243-6017

Rev. V1.1

Immunoprecipitation analysis using anti-beta II Tubulin Monoclonal Antibody. Western blot was performed from the immunoprecipitate using beta II Tubulin Monoclonal Antibody at a dilution of 1:100. Lane 1: 5% Input, Lane 2: beta II Tubulin Monoclonal Antibody, Lane 3: Rabbit monoclonal IgG Isotype

Observed-MW:55 kDa

Calculated-MW:50 kDa

Preparation & Storage

Storage Store at -20°C Valid for 12 months. Avoid freeze / thaw cycles.

Shipping Ice bag

Background

Beta-tubulin is a protein that forms the backbone of cells. Tubulin can be divided into several kinds of Tubulin, including α , β , γ , δ , and ϵ , among which α -tubulin and β -tubulin can form heterodimers and are the two most important Tubulin for microtubule formation. The molecular weights of α -tubulin and β -tubulin are 55kDa and 50kDa, respectively, and the actual detected bands are around 55kDa. As an internal reference protein, the protein levels of β tubulin generally do not change. Therefore, it has been widely used as a reference for the consistency of sample loading in Western Blotting and also for immunostaining to observe the microtubule structure of cells.

For Research Use Only

Toll-free: 1-888-852-8623
Web: www.elabscience.com

Tel: 1-832-243-6086
Email: techsupport@elabscience.com

Fax: 1-832-243-6017

Rev. V1.1