

# Recombinant Human Chymotrypsinogen B/CTRB1 Protein (His Tag)

Catalog Number: PKSH032254



**Note:** Centrifuge before opening to ensure complete recovery of vial contents.

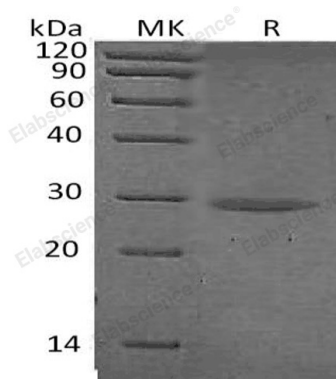
## Description

<b>Species</b>	Human
<b>Mol_Mass</b>	26.9 kDa
<b>Accession</b>	P17538
<b>Bio-activity</b>	Not validated for activity

## Properties

<b>Purity</b>	> 95 % as determined by reducing SDS-PAGE.
<b>Endotoxin</b>	< 1.0 EU per $\mu\text{g}$ of the protein as determined by the LAL method.
<b>Storage</b>	Store at $< -20^{\circ}\text{C}$ , stable for 6 months. Please minimize freeze-thaw cycles.
<b>Shipping</b>	This product is provided as liquid. It is shipped at frozen temperature with blue ice/gel packs. Upon receipt, store it immediately at $< -20^{\circ}\text{C}$ .
<b>Formulation</b>	Supplied as a 0.2 $\mu\text{m}$ filtered solution of 20mM Tris-HCl, 150mM NaCl, pH 8.0.
<b>Reconstitution</b>	Not Applicable

## Data



> 95 % as determined by reducing SDS-PAGE.

## Background

Chymotrypsinogen B (CTRB1) is a 263 amino acid protein with signal peptide (1-18) and Chymotrypsinogen B (19-263). Chymotrypsinogen B have three chains: Chymotrypsin B chain A (19-31), Chymotrypsin B chain B (34-164), Chymotrypsin B chain C (167-263). Chymotrypsinogen B is a Serine Protease Hydrolase secretes into gastrointestinal tract as the inactive precursor Chymotrypsinogen.

## For Research Use Only