

# Septin 11 Polyclonal Antibody

Catalog Number: E-AB-90367



**Note:** Centrifuge before opening to ensure complete recovery of vial contents.

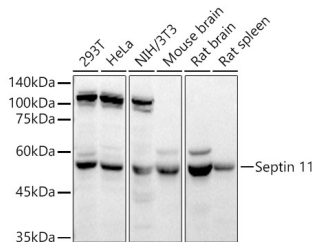
## Description

<b>Reactivity</b>	Human, Mouse, Rat
<b>Immunogen</b>	Recombinant fusion protein of human Septin 11
<b>Host</b>	Rabbit
<b>Isotype</b>	IgG
<b>Purification</b>	Affinity purification
<b>Conjugation</b>	Unconjugated
<b>Formulation</b>	PBS with 0.01% thiomersal, 50% glycerol, pH 7.3.

## Applications Recommended Dilution

<b>WB</b>	1:500-1:2000
-----------	--------------

## Data



Western blot analysis of extracts of various cell lines using Septin 11 Polyclonal Antibody at 1:4000 dilution.

**Observed MW: 49kDa**

**Calculated Mw: 49kDa/50kDa**

## Preparation & Storage

**Storage** Store at -20°C. Avoid freeze/thaw cycles.

## Background

SEPT11 belongs to the conserved septin family of filament-forming cytoskeletal GTPases that are involved in a variety of cellular functions including cytokinesis and vesicle trafficking (Hanai et al., 2004 [PubMed 15196925]; Nagata et al., 2004 [PubMed 15485874]). [supplied by OMIM, Jul 2009]

## For Research Use Only

A Reliable Research Partner in Life Science and Medicine

Toll-free: 1-888-852-8623

Web: [www.elabscience.com](http://www.elabscience.com)

Tel: 1-832-243-6086

Email: [techsupport@elabscience.com](mailto:techsupport@elabscience.com)

Fax: 1-832-243-6017