

Recombinant HIV Recombinant HIV gp120 Protein (His Tag)



Catalog Number:PKSQ050061

Note: Centrifuge before opening to ensure complete recovery of vial contents.

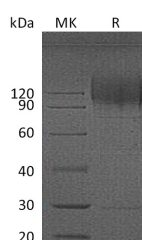
Description

Synonyms	Envelope glycoprotein gp120;Glycoprotein 120;Surface protein gp120
Species	HIV
Expression Host	HEK293 Cells
Sequence	Met1-Glu498
Accession	Q9DKG6
Calculated Molecular Weight	57.0 kDa
Observed molecular weight	90-140 kDa
Tag	C-His

Properties

Purity	> 95 % as determined by reducing SDS-PAGE.
Endotoxin	< 1.0 EU per µg of the protein as determined by the LAL method.
Storage	Generally, lyophilized proteins are stable for up to 12 months when stored at -20 to -80°C. Reconstituted protein solution can be stored at 4-8°C for 2-7 days. Aliquots of reconstituted samples are stable at < -20°C for 3 months.
Shipping	This product is provided as lyophilized powder which is shipped with ice packs.
Formulation	Lyophilized from a 0.2 µm filtered solution of PBS, pH 7.4. Normally 5 % - 8 % trehalose, mannitol and 0.01% Tween80 are added as protectants before lyophilization. Please refer to the specific buffer information in the printed manual.
Reconstitution	Please refer to the printed manual for detailed information.

Data



> 95 % as determined by reducing SDS-PAGE.

Background

Envelope glycoprotein gp160 is single-pass type I membrane protein. The mature envelope protein (Env) consists of a homotrimer of non-covalently associated gp120-gp41 heterodimers. It is cleaved into the following 2 chains: glycoprotein 120 and transmembrane protein gp41. The resulting complex protrudes from the virus surface as a spike. The 17 amino acids long immunosuppressive region is present in many retroviral envelope proteins. Synthetic peptides derived from this relatively conserved sequence inhibit immune function in vitro and in vivo.

For Research Use Only

A Reliable Research Partner in Life Science and Medicine

Toll-free: 1-888-852-8623

Web: www.elabscience.com

Tel: 1-832-243-6086

Email: techsupport@elabscience.com

Fax: 1-832-243-6017